

PAM DISEASTER RELIEF SUPPLIES REPORT

TAFEA AUSTRALIA CONNECTION COMMUNITIES



25 August 2015

Report Compiled by Lutu Sakita

Overview

In March 2015 tropical cyclone Pam hit Vanuatu and caused massive destruction particularly in the Shefa and Tafea islands of Erromango, Tanna, Aniwa. Futuna and Aneitym. The category 5 cyclone known as a monster has damaged homes and gardens that most people in the area depended on for subsistence living.

The Australia South Sea Islanders- Port Jackson responded by sending much needed relief items to the people who were most affected via Tafea Australia Connection Communities (TACC) in Port Vila who then shipped the items to affected areas for distribution.

TACC worked collaboratively with local authorities, institutions, companies and individuals shipped the items to Tanna and stored them at Nikoletan Council of Chiefs premises at Lenakel and worked collaboratively with Tafea Provincial government Council, Niko Letan council of chiefs, Tafea cultural centre, Lenakel municipality and some relief distributing agencies to distribute to 112 tribes in Tanna and four other Tafea offshore islands of Aneitum, Futuna, Aniwa and Erromango.

The distribution process that TACC has embarked on has tremendous positive effect on the re-strengthening of tribal council's structure. People in remote areas rely on community/tribal governance that encompasses leadership, community harmonisation and livelihood sustenance.

During the official welcome in Tanna the Vice President of the Tafea Australia Connection Mrs Josephine Fred thanked the Australian South Sea Islanders and said that the Australia South Sea Islanders who donated the relief items were descendants of Vanuatu who were taken 150 years ago by force to work in plantations in Australia. The donation they made is the beginning of the process of rebuilding their links with their tribes and TACC is prepared to facilitate this process.

Tafea Provincial Government Council Secretary General Mr Reynold Sumat also acknowledged the Australia South Sea Islanders for donation to Tafea and TACC for facilitating the distribution process. He further said that Tafea region lacks technical human resource and welcomed ASSI skill people to assist.

Outlined further is the distribution list for the areas that benefited from the much needed items

Summary of distribution

ISLAND	AREAS	TRIBES	HEAD NAKAMALS	SUP NAKAMALS	HOUSE HOLD	SCHOOLS	HOSPITALS	RESORTS	VOLUNTEERS
	TANNA						HOSPITAL- 1	26	TANNA- 67

TANNA	1.WEST-	19	22	89	2,686	KINDY- 20 PRIMARY- 25 SECONDARY- 10 TOTAL=55	DESPENSARY- 6		TRANSPORT- 8	
	2.NORTH-	6	7	20	671		CLINICS- 6		MV TOURAKEN- 10	
	3.CENTRAL-	11	13	52	1,982		MUNICIPAL- 1		POLICE- 5	
	4.EAST-	6	30	120	4,534		ABBOTOIRS- 1		PWD- 3	
	5.SOUTH.EAST -	7	9	36	1,789		TOTAL= 15			FORESTRI- 1
	6. SOUTH	6	8	30	1,231					TOTAL= 94
	7. SOUTH- WEST	15	17	77	3,590					
	8. FUTUNA COMMUNITIES	4	4	4	351					
	9. ANIWA "	2	2	2	26					
	10. ERROMANGO "	1	1	1	40					
	= 7	= 70	= 82	= 336	13,990					
	VOLUNTEERS									
EFATE										
VILA										
EPI ISLAND	50- COMMUNITIES (Around Port Vila)				1000	VILA	VILA		VILA	
MATASO ISLAND	1-CLINIC 4- COMMUNITIES				=50	KINDY- 1 PRIMARY- 2 SECONDARI- 4 TOTAL=7	ACTION AID- 1 GREEN PEACE- 1 HOME BURN- 1(5) (fire) TOTAL= 7		VOLUNTEER- VILA- 90 TRANSPORT- 6 BUS DRIVERS- 4 TOTAL= 100	

Below is the detailed distribution list for Tafea region including areas in Port Vila.

Table show's list of items donated for Tanna

ISLAND	ITEMS	TOTAL ITEMS	No OF ITEMS	CONSIGNEE
TANNA	➤ TAPOLAN	1,200	910	NATOU.GEORGE
	➤ BLANKETS	14,169	6,000	
	➤ SHEETS	9,695	5,000	
	➤ TOWELS	1,670	208	
	➤ TRAIS	17,496	2000	
	➤ FIRST AID KITS	300	36	
	➤ CLEARENCE GLOVE	900	112	
	➤ BUCKETS	232	58	
	➤ INTERSTRIAL WORK WEAR	6,800	5,000	
	➤ PERSONAL FIRST AID KITS	150	30 (5 SCHOOL)	
	➤ SURVIVEL PACK BACK	112	280	

List of villages on Tanna that benefited from TACC Pam relief supplies

SW TANNA	SOUTH TANNA	EAST TANNA	Central Bush	NORTH TANNA	WEST TANNA
Ikakahak	Ikunap	Sulphur Bay	ikapau	enaula	Ballande
Materkerek	Irinian	Imale	isaka	Eniu	Bethel
Imatanik	Imlakel	Nikimei	iunapik	enuarat	Enipir
Matukinha	Nukuneknun	lenimakel	Iwel	green hill	Iaknauka
Ieanirah	Imarap	lenimaha	Iamlu	Hibron	Ianaula com
Ikati	Ianarawia	Ipekangien	Iamnatu	imnakaip	Ianumta
Ieakakir	Launialu	Iarkei	Iapongnuin g	Iamakauen	Iarakik
Kwataparan	Ianapus	Lounasunan	Iaunakik	Iaoialafama	Iatpalania n
Inapkasu	Imaraur	Lounou	Iawnim	Iaokasapen	Ielwalu
Irkis	Lokauien	Ilareng	Ieulik	Iapangnua	Ilemsin
Ienuantung	Ikunara	Nalungienia	Loakal	Iapasilis	Iensine
Iekel	Iauhu	lenimahu	Ionuatuan	Iaperanim	Iifa
Epkesip	Imai	Imalet	Iounamage ng	Iaukaulis	Ikitingting
Islah	Itaplanoian	Laowanuwi	Iounatum	Iaukaulis	Ikunala
Lounaiau	Iakuauke	Lapandaoa	Inimaine	Iaunatha	Ikuningen
Itakren	Imaki	Louniel	Ikaunimeike n	Iavis	Ilifufu
Ienapuas	Iapkapen	Waisisi	Ionipupunp en	Iawital	Ilanpanak
Ienmarai	Reumene	Kitow	Iaunahuru	Iounamlo	Imaelone
Iarutana	Isakrkei	Napuas	Ionakiamap en	Iounapau	Imaen
Iakel	Esameria	Iatapu	Ionamilo	Iounapikru	Imai
Iatafum	Kuramanu	Iamanaruan	IImanga	Iowkapalit	Imaia
Ianimnaua	Ikurup	Iauangi	Iwerua	Iownimaha	Imaieleone
Iatukas	Ianaias	Taus	Iomia	Iowniting	Imanam
Kuakua	Epaur	Iowekau	Iotiklipe	Iaketam	Iimasu
Ialakirirak	Imaku	Karunanen	Ifetukai	Iamanianco	Imouh
Ienfitana	Ianuak	Iatun	IImaus	Iamkail	Iisini
Imai	Ianmerin	Iaumahu	IImak	Iamtahekel	Iitunga
Ianukrapeng	Kalali	Iawpukas	Iamapruan	Ianiakapam	Iuniar - Ipai
Ianareng	Ikuarmanu	Ielualu	Ianemita	Iapamgmita	Iwahu
Ianapraper	Isaka	Ienatuan	Ianipen	Iapnuman	Iwiak
Ieulik	Itata	Ioukahmal	Iaonarai	Iarkom	Iatinaluik en
Loakal	Ikutumien	Ioukorafa	Iaoul	Iaruenu	Iengkipas
Ionuatuan	Irumang	Iounahon	Iatkakru	Iaukanauk	Iouian
Louanama	Iapongnuing	Iamlu	ikapau	Iaunik	Iafna
Iowaialeu	Iaunakik	Iamnatu	isaka	Ieniakapam	Iamanafa
Iownatom	Iawnim	Iwel	iunapik	Ieniakis	Iamanhu al
Ioweneai	Inamalmene	Iounapikiko	Ieneai	Ienpakel	Iawia
Iownapka	Iannakol	Ioutaliko	Ioukanapik	Ienualu	Iawkutua n
	Iennis	Iounelapen	Ioukatai	Ienui	Ienamir

	Tennis Futuna	Lounapkausim	e	Loukauhain	Iru	Letaupam	Lenamy
	Urenas	Louniparu		Loun		Letaus	Lenapuas
	Lounara	Lounapkamei		Lounaparu		Letowaulul	Lenasilian
	Lounik	Lenawawa	n	Lounapiktua		Louaneai	Lenauhia

Table show's list of items donated for Port Vila

Port Vila, Epi & Mataso	➤ TAPOLAN	1,200	112	
	➤ BLANKETS	14,169	1774	
	➤ SHEETS	9,695	1210	
	➤ TOWELS	1,670	208	
	➤ TRAIS	17,496	2186	
	➤ FIRST AID KITS	300	36	
	➤ CLEARANCE GLOVE	900	112	
	➤ BUCKETS	232	58	
	➤ INTERSTRIAL WORK WEAR	6,800	850	
	➤ SURVIVEL PACK BACK	112	280	

Table show's list of items donated for Erromango

ERROMANGO	➤ TAPOLAN	1,200	56	JASON METE
	➤ BLANKETS	14,169	887	
	➤ SHEETS	9,695	605	
	➤ TOWELS	1,670	104	
	➤ TRAIS	17,494	1093	
	➤ FIRST AID KITS	300	18	
	➤ CLEARANCE GLOVE	900	56	
	➤ BUCKETS	232	29	
	➤ INTERSTRIAL WORK WEAR	6,800	425	
	➤ SURVIVEL PACK BACK	2,241	140	

Table show's list of items donated for Aneitum

ANEITUM	➤ TAPOLAN	1,200	56	James Nakau
	➤ BLANKETS	14,169	887	
	➤ SHEETS	9,695	605	
	➤ TOWELS	1,670	104	
	➤ TRAIS	17,494	1093	
	➤ FIRST AID KITS	300	18	
	➤ CLEARANCE GLOVE	900	56	
	➤ BUCKETS	232	29	
	➤ INTERSTRIAL WORK WEAR	6,800	425	
	➤ SURVIVEL PACK BACK	112	140	

Table show's list of items donated for Aniwa

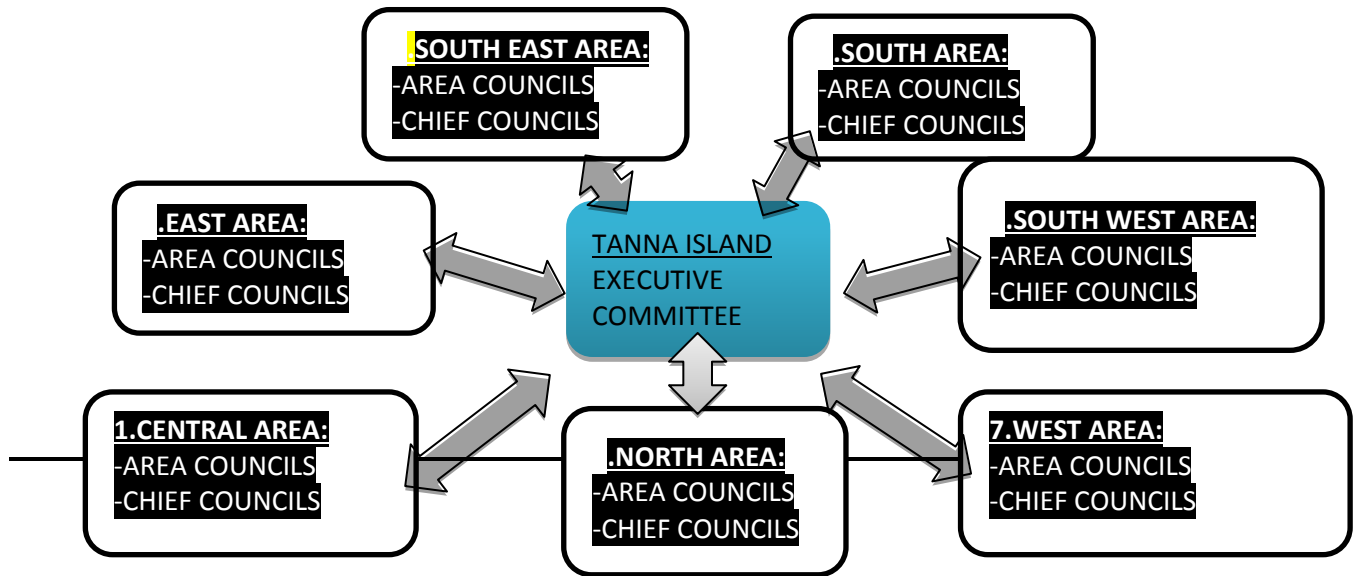
ANIWA	➤ TAPOLAN	1,200	56	
-------	-----------	-------	----	--

➤	BLANKETS	14,169	887	
➤	SHEETS	9,695	605	
➤	TOWELS	1,670	104	
➤	TRAI	17,496	1093	
➤	FIRST AID KITS	300	18	
➤	CLEARANCE GLOVE	900	56	
➤	BUCKETS	232	29	
➤	INTERSTRIAL WORK WEAR	6,800	425	
➤	SURVIVEL PACK BACK	112	140	

Table show's list of items donated for Futuna

FUTUNA	➤	TAPOLAN	1,200	56	
	➤	BLANKETS	14,169	887	
	➤	SHEETS	9,695	605	
	➤	TOWELS	1,670	104	
	➤	TRAI	17,496	1093	
	➤	FIRST AID KITS	300	18	
	➤	CLEARANCE GLOVE	900	56	
	➤	BUCKETS	232	29	
	➤	INTERSTRIAL WORK WEAR	6,800	425	
	➤	SURVIVEL PACK BACK	2,241	140	

SEVEN AREAS IN WHICH TACC DISTRIBUTING TAKES PLACE DURING CYCLONE PAM 2015



ACKNOWLEDGMENT

TACC would like to sincerely thank the following institutions and People who have helped out in TACC distribution;

Australian South Sea Islander's

Mrs Emelda Waskam Davis

Vanuatu Government (NDMO)

Late Edward N Natapei

MP Pascal Iauko Iaris

Mr Benny Wenda

Mr Peter Sakita

Mr. Xavier Harry

Mr Johnny Koanapo

Vanuatu Environment Advocacy Network

ActionAid

Blackman Town Municipality

Tafea Southern Police Patrol

Taule Taule Association

Niko Letan Councils of Chiefs

Tafea Kaljerol Senta

Touraken Shipping LTD

IFIRA TRUSTEE

Vanuatu FERRY Shipping

Executive and Members of Tafea Australia Communities

Tanna Chiefs and people











Government of the Republic of Vanuatu
 National Disaster Management Office
 Phone: +678 22699 / +678 23035 Email: ndmo@vanuatu.gov.vu
 Post: NDMO, Private Mail Bag 9107, Port Vila, Vanuatu

Submit by Email



NDMO Ref: _____

The Director
 Customs and Inland Revenue
 PMB 9012
 Port Vila

I hereby certify that the goods to which this declaration applies are imported by/to be supplied to:

Consignee: NDMO

(Name of person or body in respect of which concession is claimed)

Bill of Lading/Airway Bill Number: ~~NDMO~~ AUSYD0409820

and duty concession is claimed under Code No210 of Part 3 of the Schedule 1to the Import Duties Act (Cap 91) subject to the conditions therein specified.

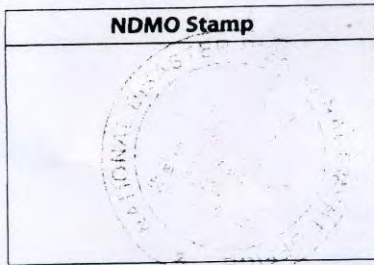
Signature: [Signature]

Name: Shadrack Welegtabit

Date: 24/04/15

Status: Director - NDMO

NDMO Stamp



Annex 2:Packing List for 5 X 40ft containers

QTY:	Item:	Total QTY:
30.	BAGS OF 10 WRAP BLANKETS.	300
110.	BAGS CONTAINING TROPICAL BLANKETS.	1508
1	BULK BAG, TROPICAL BLANKETS.	350
1.	BULK BAG, TROPICAL BLANKETS.	242
118.	ROLLS, INSUBUBBLE FABRIC.	118
20.	BAGS, 100M 6MM POLYROPE	
	PAL B. 1282 HYGENIC FOOD TRAYS	
	5 ROLLS 13MM FIBRE ROPE	100 M
	3 ROLLS 1000M BAILING TWINE	
	PAL C. 960 HYGENIC FOOD TRAYS	
481	TROPICAL BLANKETS	
10	20x20 FOOT TARPAULINS	
	PAL D. 1250 HYGENIC FOOD TRAYS	
900	DEBRIS CLEARANCE GLOVES	
24	16x20 FOOT TARPAULINS	
	PAL G. 1000 HYGENIC FOOD TRAYS	
	PAL X. 150 PERSONAL FIRST AID KITS	
1000	HYGENIC FOOD TRAYS	
2	BLANKETS	
	PAL Z. 130 TROPICAL BLANKETS	
	20 24x36 FOOT TARPAULINS	
16	16x20 FOOT TARPAULINS	
	CAGE 1. 10 ROLLS 30x10 METRE TARPAULIN FABRIC	
12	CANVAS CASUALTY STRETCHERS	
	CAGE 2. 5 HAULING BLOCKS	
1	COIL 12mm FIBRE ROPE	
2	COIL 6mm POLYROPE	
9	COIL 13mm SYNTHETIC ROPE	
	CAGE 3. 15 75m x 13mm SYNTHETIC ROPE KITS	
	CAGE 4. 14 75m x 13mm SYNTHETIC ROPE KITS	
	Wrapped with love blankets	300
	Tropical light weight blankets	3,203
	Synthetic rope kits 75m/13mm	29
	Insul bubble fabric rolls	118
	Tarpaulin fabric 30x19mtr rolls	10
	Tarpaulins	94
	Hygenic food prep trays	5,492
	Personal first aide kits	150
	Poly rope 6mmx100mt rolls	20
	Fibre rope 13mmx100mt rolls	5
	Fibre COIL rope	12
	Balding twine 1000mt rolls	3
	Tents (two man)	2
	Stretchers (canvas)	12
	Hauling blocks	5
7	Casualty stretchers	7
1	Timber spinal stretcher	1
8	Tarpaulin fabric rolls 30m x 3m	8

107	S/Steel water buckets	107
	Pallet A 2928 Hygenic food preparation trays	2928
13	Poly rope 6mm (bulk bags) 10000m	10000
100	Insul bubble-100 rolls	100
4	Tropical strength blankets (681)bulk bag	681
59	Industrial Shirts bulk bags	704
53	Industrial trousers bulk bags	860
16	Overalls light weight	160
1	Sheets white linen	100
1	Sheets white linen	100
1	Sheets white linen	100
1	Sheets white linen	100
1	Survival back packs	112
1	Work wear	300
1	White linen sheets	700
1	White linen sheets	800
	Canvas casualty stretchers x	8
	Tarpaulin fabric rolls 30m / 30m x	8
	20Ltr steel water buckets –	107
	Pallet A, hygienic food preparation trays x	2928
	Poly rope (bulk bags) 6mm, 10000m/130000m x	13
	Insul bubble -100 rolls x	100
	Tropical weight blankets (4 bulk bags) -	681
	Industrial work wear (trousers, shirts overalls / light weight) 128 bags – 2027	
	Linen white sheets -	1200
	Survival back packs –	112
	Towels 300ea	600
2	Sheets white linen 180 ea	360
4	Tropical light weight blankets	1400
1	Towels (bulk bag)	200
1	Sheets white linen	100
2	Sheets white linen 150 ea	300
74	Tarpaulin rolls 1.2x20m	74
3	Sheets white linen	600
1	Tropical weight blankets	360
	Towels 3 bags –	800
	Tarpaulin rolls	74
	Sheets white linen - 5x430 boxed –	1360
	Blankets tropical weight 4bags x350 - sheets	1760
		210
18	20L stainless steel water buckets	18
1	Hygenic food trays	600
1	industrial workwear trousers	200
1	industrial workwear shirts	250
1	industrial workwear overalls	200
1	industrial workwear overalls	150
1	industrial workwear shirts	150
1	linen sheets	300
1	linen sheets	300
1	linen sheets	300
1	cotton sheets	700

1	industrial workwear overalls	200
1	industrial workwear shirts	250
1	industrial workwear trousers	200
1	industrial workwear shirts	200
1	linen sheets	300
1	linen sheets	300
1	linen sheets	300
1	industrial workwear overalls	200
1	industrial workwear shirts	250
1	assorted industrial workwear	350
1	bath towels	300
1	bath towels	300
1	assorted industrial workwear	250
1	cotton sheets	150
1	sheets	400
1	sheets	400
1	assorted industrial workwear	350
1	assorted industrial workwear	350
1	industrial workwear trousers	250
1	cotton sheets	700
1	cotton sheets	700
1	cotton sheets	700
1	assorted industrial workwear	350
1	assorted industrial workwear	350
1	assorted Industrial workwear	350
1	assorted industrial workwear	350
1	cotton sheets	700
1	cotton sheets	700
1	assorted workwear	250
1	industrial workwear overalls	200
1	assorted workwear	250
1	cotton sheets	150
1	cotton sheets	150
1	linen sheets	230
1	linen sheets	230
1	industrial workwear overalls	200
1	assorted workwear	250
1	tropical blankets	350
1	tropical blankets	350
1	cotton sheets	700
1	assorted industrial workwear	250
	industrial workwear overalls	200
	Sheets White Linen –	8,620
	Hygenic food trays –	600
	Buckets water stainless steel – 20Ltr x	18
	Overalls Industrial workwear -	750
	Trousers Industrial workwear -	650
	Shirts Industrial workwear –	1,100
	Bath Towels -	600
	Assorted Industrial workwear –	3,700
	Overalls Industrial workwear -	600

Tarpaulins	533
1 Tropical strength blankets	400
1 Tropical strength blankets	400
1 Tropical strength blankets	400
10 Tarpaulin Rolls 50m	10
5 Long stretchers	5
30 Silver rope 6mm, 250m length	
14 Kurmantle rope 50mtr (13diamtre)	
Assorted work wear	250
Tropical strength blankets	400
1 Sheets linen	350
4 Rope x 50 mtr (13mm diamtre)	
1 Assorted work wear	250
1 Sheets linen	350
4 Rope 50 mtr (13mm diamtre)	
1 Assorted work wear	250
1 Sheets linen	350
1 Assorted work wear	350 1
Sheets linen	350
1 Sheets linen	350
1 Nylon rope 6mm	10000m
1 white bulk bag empty	1
1 Sheets linen	350
1 Sheets linen	350
1 Assorted work wear	350
1 Bath towels	70
1 Baling twine	1000m
1 Sheets linen	350
1 Sheets linen	350
1 Sheets linen	100
1 Assorted work wear	250
1 Sheets linen	150
1 Assorted work wear	250
1 Sheets linen	225
Tropical weight blankets –	1600
Tarpaulins –	533
White linen sheets –	3281
Tarpaulin Rolls – 50mtrs x	10
Silver rope 6mm / 250mtr length x	30
Kurmantle rope 50 mtr /13 mm diameter x	14
Rope 13mm diameter / 50mm x	4
Mens work wear x	1650
Nylon Rope 6mm / 10,000 mtr x	1
White bulk bag (empty) x	1
Bath towels x	70
Annex 3 Forms used for tribes	



TAFEA AUSTRALIA CONNECTION

Tafea Australia Connection (TACC) is registered under the charitable act of the Vanuatu Financial Service Commission.

The purpose of TACC is to promote common interest between Ni-Vanuatu and the Australian South Sea Islanders and coordinate activities that strengthen their links such as.

- Employment
 - RSE
 - Long term
- Educational
 - Scholarship
 - Courses and Forums
- Rehabilitation
 - Housing and infrastructure development
 - Relief supplies
- Exchange program
 - Cultural event
 - Skill and semi skill employment

Executive Members

1. Acting President: Wilson Kanam
2. Vice President: Josephine Fred
3. Secretary: Arieta Yatibu
4. Vice Secretary: George Kauras
5. Treasurer: Lutu Sakita
6. Vice Treasurer: Mary Nautei
7. Coordinator: Lai Sakita
8. Communication: Joe Harry Garu

Recognition and support

- ☑ Award of recognition from TAFEA province government council
 - Award of recognition from Nikoleten Council of Chiefs
 - Award of recognized from Australia South Sea Islanders – Port Jackson

