



THE
CHRISTENSEN
FUND

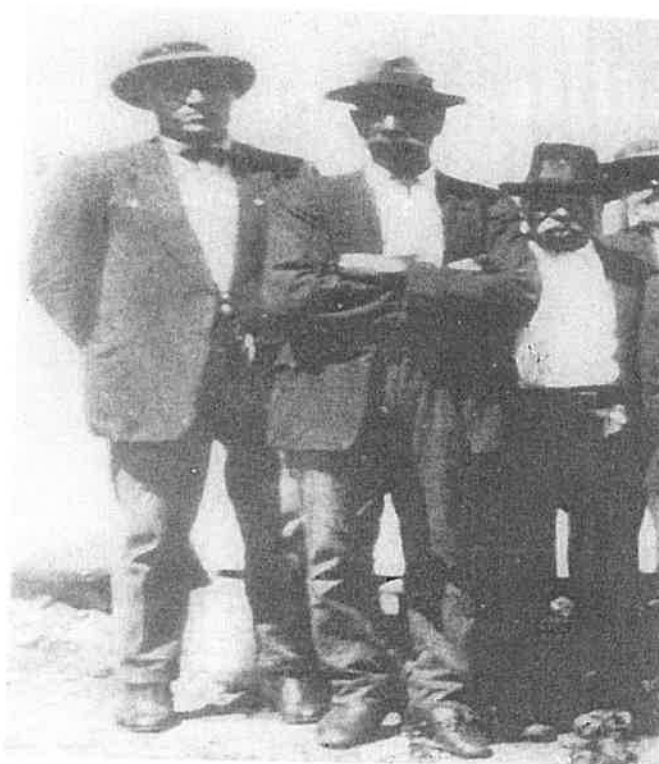
FAENDEM BAEK FAMILI WORKSHOP

BOOK - 3

Australian South Sea Islanders
Queensland State Archives Records

NATIONAL MUSEUM OF SOLOMON ISLANDS
HONIARA, SOLOMON ISLANDS

28 November to 1 December 2014



Jacob Penola, Jack Marau and John McLeo, at Mackay



THE UNIVERSITY
OF QUEENSLAND
AUSTRALIA



Contents

Queensland State Archives

Finding Aids

Australian South Sea Islander Resources

Australian South Sea Islander Records

Australian South Sea Islanders, 1867-1908

Pacific Islanders' Fund

Annual Statement of Accounts, 1896

(*Queensland Votes and Proceedings*, 1896, Vol. 3, pp. 199-200.)

Queensland Immigration Agent

Annual Report on Pacific Island Immigration, 1904

(*Queensland Parliamentary Papers*, Vol. 1, 1904-1905, pp. 61-65.)

Statistics on the Number of Labourers from Each Island

Extract from Charles Price with Elizabeth Baker, "Origins of Pacific Island Labourers in Queensland, 1863-1904: A Research Note", *Journal of Pacific History*, Vol. 11, No. 2, 1976, 106-121.

[Queensland State Archives](#) > [Researching the archives](#)
> [Resources for researchers](#) > [Australian South Sea Islander resources](#)

Australian South Sea Islander resources

Australian South Sea Islanders are a distinct cultural group who are the descendents of predominantly Melanesian people brought to Queensland between 1863 and 1904 from the Pacific Islands.

Queensland State Archives holds various records within its collection relating to Australian South Sea Islander people from their first arrivals in the early 1860s to their subsequent repatriation or settlement in Queensland, particularly in the first two decades of 1900s.

Queensland State Archives successfully nominated 67 items relating to Australian South Sea Islanders for inscription on the UNESCO [Australian Memory of the World Register](#), in 2013, and the UNESCO [Memory of the World Regional Register for Asia/Pacific](#), in 2014. The nominations focused on the public records created by the Inspectors of Pacific Islanders and Immigration agencies plus the Health Officer's report for the first voyage that brought South Sea Islanders to Queensland in 1863. View the [list of nominated records](#) (100KB) that includes links to digital images of the records.



United Nations
Educational, Scientific and
Cultural Organization

Resources



[Guide: Australian South Sea Islander records](#) (PDF, 117KB)

This guide lists Queensland State Archives records relating to Australian South Sea Islander people. The records cover the areas of immigration or recruitment, employment,

repatriation, exemptions, education and settlement of the Australian South Sea Islander people in Queensland. The guide also outlines relevant Legislation.



[Online index: Australian South Sea Islanders 1867-1908](#)

An online index compiled from a wide variety of sources including Immigration Department records, Inspectors of Pacific Islanders across Queensland, the Crown Solicitor's Office and the Chief Secretary's Department.

Video on the historical significance of the records in the Australian South Sea Islander collection and how to research them



*For full screen viewing, we recommend changing quality to 720p (use icons that appear on bottom of video)

[Map of Oceania from the Geographic Guide web site](#)



[View larger map](#)

The South Sea Islander people came from over 80 different islands. New arrivals from 1871 to 1890 represented the islands of Loyalty, New Hebrides, Banks, Torres, Santa Cruz and Solomons, and the New Guinea islands. In the nineteenth century the majority of South Sea Islanders in Queensland came from the New Hebrides and the Solomon Islands.



Online index: Coloured labour and asiatic aliens in Queensland 1913

An online index compiled from Item ID 862496, Correspondence created by the Chief Secretary's Office.



Online exhibition: A Unique History, Australian South Sea Islanders in Queensland

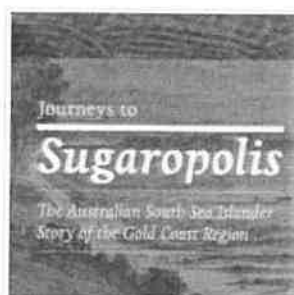
Image Queensland virtual exhibition featuring records relating to the recruitment, indenture, deportation and repatriation of South Sea

Islanders and, more recent, enrolment and school records.



Immigration stories, Australian South Sea Islanders

Banners created for Harmony Day highlighting the history of Australian South Sea Islanders in Queensland.



Journeys to Sugaropolis: The Australian South Sea Islander story of the Gold Coast

The *Journeys to Sugaropolis* booklet and exhibition looks at the lives and contributions of Australian South Sea Islanders - those early labourers and

their descendants - to the Gold Coast region. These resources are available through the Gold Coast Heritage website.

Legislation

Unless otherwise noted, the following legislation is Queensland State legislation:

Polynesian Labourers Act 1868

1868 Dealt with licenses to import, guarantee of native return, number to be recruited, scale of provisions, and prohibition of liquor.

Pacific Islanders Protection Act 1872 and 1875

1872 Amended in 1875. Protection of Pacific Islanders from kidnapping and other criminal offences.

Pacific Island Labourers Act 1880

1880 Repealed the Act of 1868. Provided for regulation and control of the introduction and treatment of labourers from the Pacific Islands. Limited the age recruits. Return to proper islands. Provision of medical treatments. Provision of rations and dress allowance.

Pacific Island Labourers Act 1884

1884 More restrictive legislation confining labour to unskilled agricultural pursuits. Crews to be paid wages. No fire arms to be supplied to islanders. Limit recruiting operations further.

Pacific Islanders' Employers' Compensation Act 1885

1885 Compensation to employers whose employees had returned by order of the Government.

Pacific Island Labourers Act 1880

Amendment Act (1885)

1886 Prohibited further importation of labourers after 31st December 1890.

Pacific Island Labourers Act 1880

- 1887 *Amendment Act (1886)*
Amended the definition of Pacific Islanders.
- 1892 *Pacific Island Labourers (Extension) Act of 1892*
Repeal of prohibition.
- 1901 *Immigration Restriction Act 1901*
Commonwealth. Received Royal Assent on 23 December 1901. It was described as an Act "to place certain restrictions on immigration and to provide for the removal from the Commonwealth of prohibited immigrants." (ref: Dept Immigration and Multicultural and Indigenous Affairs Fact Sheet 8)
- 1901-1906 *Pacific Islands Labourers Act*
Commonwealth. Decreed that there should be no further entry of Islanders after 31 March 1901. After that date deportation was to follow, with some exemptions.
- 1913 *Sugar Cultivation Act 1913*
Designed to prohibit the employment of 'certain forms of labour in the production of sugar'.

Australian South Sea Islander records

Guide 51

Queensland State Archives holds records about Australian South Sea Islander people. This guide lists records about Australian South Sea Islander people from their first arrivals in the early 1860s to their subsequent repatriation or settlement, particularly in the first two decades of 1900s. The records cover the areas of immigration or recruitment, employment, repatriation, exemptions, education and settlement of the Australian South Sea Islander people in Queensland.

These records can be found in [ArchivesSearch](#) (the Queensland State Archives catalogue).

There are three parts to this Guide:

- Part 1 covers the records created by the Inspector of Pacific Islanders
- Part 2 covers records created by all other agencies
- Part 3 outlines relevant Legislation.

Creating agencies in each part are listed alphabetically.

Part I: Records created by Inspectors of Pacific Islanders

Inspector of Pacific Islanders

Register of agreements

1/04/1884–31/08/1897

Series ID [13173](#)

This register of agreements kept under the *Pacific Island Labourers Acts 1880* section 3 of the *Pacific Island Labourers Act Amendment Act 1884* records the names of employers, estates (plantations) and districts in North Queensland. Details entered for each Pacific Islander include the number of inward passenger list, the name, sex and island of the Islander, the ship arrived on, date of agreement and expiration, wages, return passage when paid and by whom, and general remarks (deaths, returns home, re-engaged etc).

For details in this register, please refer to [Online Index to Australian South Sea Islanders](#)

Inspector of Pacific Islanders, Childers

Ledger, Pacific Islanders' wages

1/01/1896–31/07/1908

Series ID [7752](#)

These ledgers record wages paid to South Sea Islanders (Pacific Islanders) employed in the Childers district. Details given are: South Sea Islanders' name; island of origin; date of arrival in Queensland; employer's name and address and number; bank, passbook details ie. passbook number, date, transaction, C.B. number, deposits, withdrawals, balance, and remarks.

For details in this ledger, please refer to [Online Index to Australian South Sea Islanders](#)

Inspector of Pacific Islanders, Maryborough

Register of ships' arrivals

2/06/1868–23/12/1881

Series ID [13176](#)

This register, kept by the Inspector of Pacific Islanders, Maryborough, records the arrival of ships under the *Polynesian Labourers Act 1868* and the *Pacific Island Labourers Act 1880*. Under the heading 'Particulars', details for each entry include the number, name of ship, port of arrival (from 1878, to Maryborough only), and date of arrival; under the headings for each island group (Loyalty, New Hebrides, Banks, Solomons, Other Islands), details for each entry include the name of the island and the number of islanders. Summary totals for males and females and for each year are also recorded.

Register of ships' arrivals at Maryborough

9/03/1869–26/03/1877

Series ID [13174](#)

This register of Pacific Islanders arriving at Maryborough records the date of arrival, the name of the ship, and the name of the recruiting agent, and then lists the Pacific Islanders on board each ship with details including the number, name, from, disposal—name of employer, residence and date of agreement. Also included are total numbers of Islanders on each ship, dated and signed by the Inspector of Pacific Islanders, Maryborough.

For details in this register, please refer to [Online Index to Australian South Sea Islanders](#)

Register of ships' departures

5/01/1869–14/10/1881

Series ID [13177](#)

This register, kept by the Inspector of Pacific Islanders, Maryborough, records the departure of vessels returning Pacific Islanders to their homes under the "Polynesian Labourers Act 1868" and the "Pacific Island Labourers Act 1880". Under the heading "Particulars", details for each entry include the number, name of ship, port of departure (from 1877, from Maryborough only), and date of sailing; under the headings for each island group (Loyalty, New Hebrides, Banks, Solomons, Other Islands), details for each entry include the name of the island and the number of islanders (except for some entries for 1880 and for 1881 for which totals only are entered). Summary totals for males and females and for each year are also recorded.

Registers of agreements

1/06/1877–31/10/1903

Series ID [13184](#)

These registers, kept by the Inspector of Pacific Islanders, Maryborough, record the employment of Pacific Islanders ((Polynesians, South Sea Islanders) as required under the *Polynesian Labourers Act 1868* and the *Pacific Island Labourers Act 1880*, Register titles and details entered in the registers vary over time according to the Act under which the registers were kept, but, in the headings for each employer include the name of the employer, the name of the plantation and the district. Details entered for each Pacific

Islander include the number, name of the Islander, where from, date of arrival or agreement, expiration of agreement, the name of the ship arrived on, date when due for return and remarks including transfers, deaths, returns etc.

For details in this register, please refer to [Online Index to Australian South Sea Islanders](#)

Memoranda of agreements re employment of Pacific Islanders

1/01/1877–31/12/1906

Series ID [13175](#)

These signed and witnessed memoranda of agreements between employers and Pacific Islanders set out the conditions of employment of labourers including amount of wages and rations, provision of accommodation and payment of return passages. On the back of an agreement each Islander's details are included under the following headings: name and mark, island, village, wages, ship and date, first employer, last legal employer, by whom passage paid and when.

For details in this register, please refer to [Online Index to Australian South Sea Islanders](#)

Record of deaths of Polynesians

1/01/1878–30/11/1880

Series ID [13193](#)

This register, kept by the Inspector of Pacific Islanders, provides a monthly record of the causes and number of deaths of Pacific Island labourers. Yearly entries include the names of the diseases (dysentery, consumption, general debility, accidents), and the number of deaths for each disease per month. Yearly totals are also included.

Register of Pacific Island Labourers exempt from the Provisions of Clauses 3, 4 & 10 of the Act

7/05/1884–Circa 31/12/1885

Series ID [13179](#)

This register records details of Pacific Islanders exempt from the provisions of clauses 3,4 and 10 of the *Pacific Island Labourers Act 1880 Amendment Act 1884*. Details for each entry include the number, name of the Islander, island, original employer, date of arrival, ship, date of registration and remarks (mostly ticket issued and date).

For details in this register, please refer to [Online Index to Australian South Sea Islanders](#)

Cash book, Pacific Islanders' wages

2/02/1885–26/11/1907

Series ID [13183](#)

This cash book, kept by the Inspector of Pacific Islanders, Maryborough, records amounts received from Pacific Islanders and lodged to their credit in Savings bank accounts, and withdrawals paid to Islanders. Under Cash, details for each entry include the date, number of savings bank pass book, name of islander, ledger folio, amount received from islander, withdrawal received from Savings Bank. Under Per Contra, details also include withdrawal

paid to islanders and witness to payment. Throughout the book quarterly Savings Bank balances are also included.

For details in this cash book, please refer to [Online Index to Australian South Sea Islanders](#)

Ledger, Pacific Islanders' wages

1/02/1885–30/11/1907

Series ID [13181](#)

This ledger records deposits and withdrawals in Pacific Islanders' Savings Bank Accounts kept by the Inspector of Pacific Islanders, Maryborough. Details entered for each Islander include the Pass Book number, the name of the islander, ex (name of ship), and the name and address of employer. These entries are followed by spreadsheet columns for recording bank transactions with ledger details for each entry including the date, transaction (usually 'interest'), Cash Book folio number, deposits, withdrawals, balance and remarks (initials and date).

For details in this ledger, please refer to [Online Index to Australian South Sea Islanders](#)

Government Savings Bank Pass-Books

13/03/1885–31/08/1899

Series ID [5246](#)

These Queensland Government Savings Bank Pass-books were issued to Inspectors of Pacific Islanders as trustees for Pacific Island labourers. Entries in the Pass-books include the dates, Government Savings Bank stamps, the amount deposited and withdrawn, the balance and the initials of the Bank Officer.

Cash books, Queensland National Bank Account

6/01/1886–7/10/1907

Series ID [13182](#)

These cash books record the Queensland National Bank Limited in account with the Inspector of Pacific Islanders (Polynesian Inspector), Maryborough. Details for each entry include the date, particulars of cash deposited (for example, transfer and bond, return passages, wages), by whom (names of individuals, companies, Immigration Agent, etc), amount, particulars of cheques drawn, in whose favour (names of individuals, Immigration Agent, ship owners), particulars of service (salaries and allowances, return passages, provisions etc) and amount.

For details in this cash book, please refer to [Online Index to Australian South Sea Islanders](#)

Circulars to the Inspector of Pacific Islanders

14/08/1887–28/07/1908

Series ID [13188](#)

These circulars were addressed to the Inspector of Pacific Islanders, Maryborough and sent by the Immigration Department, Pacific Island Labour Branch. They include directives sent to all Inspectors and others of concern only to the Maryborough Inspector. They relate

to administrative matters such as records to be kept and returns to be forwarded to the Department, and the Commonwealth's assumption of responsibility for Pacific Island labourers after 1901. Matters relating directly to Pacific Islanders include the closure of the hospital, agreements, moneys due to Islanders and Savings Bank deposits, return passages, deportations and exemptions, drunkenness of vessel crews, and firearms and ammunition on vessels. The final circular (250) advises of the date of closure of all Pacific Island labour offices on 31 July 1908.

Letterbooks

31/12/1888–13/02/1908

Series ID [13185](#)

Letterbooks of letters sent by the Inspector of Pacific Islanders, Maryborough

Book of receipts for return passages of Polynesian (Pacific Island) labourers

30/01/1890–Circa 31/05/1904

Series ID [13192](#)

This book contains stubs of receipts for return passages of 'Polynesian' (Pacific Island) labourers. Details on each receipt include the number, date, received from (name or company) and sum for return passage of (either number of Islanders or names of Islanders) lately employed by (usually crossed out and ex name of ship included), and amount.

Books of telegrams sent

16/09/1892–1/05/1902

Series ID [13197](#)

These books contain copies (on stubs) of telegrams sent by the Inspector of Pacific Islanders, Maryborough and in his capacity as Assistant Immigration Agent. Details for each telegram include the date, the message to be transmitted, from whom, and to whom addressed. Most were sent to the Immigration Agent, Brisbane (who was also the Inspector of Pacific Islanders), other government agencies such as the Government Labour Bureau, and individuals. Messages related to administrative matters, vessels used in Pacific Islanders' recruitment, labour required etc.

Item ID 18871 of this series is included in [Online Index to Australian South Sea Islanders](#)

Register of Re-agreements

6/03/1893–1/02/1905

Series ID [13186](#)

This register records re-agreements between Pacific islanders and employers under the *Pacific Island Labourers Acts 1880–1892*, section 3 Amending Act. Under the headings of the name of the employer, the estate (plantation) and district, details for entries of Pacific Islanders include the number of inward passenger list, the name of the Islander, sex, island, village, name of ship and date of arrival, date of agreement and expiration of agreement, rates of wages per annum and wages paid quarterly, by whom guaranteed, return passage

when paid and by whom, Chief Office re-agreement folio reference, reference folio of last employer, re-agreement folio, subsequent information (employer name).

For details in this register, please refer to [Online Index to Australian South Sea Islanders](#)

Book of permits to carry Pacific Islanders Coastwise

30/11/1896–23/03/1905

Series ID [13180](#)

This book contains stubs of permits signed by the Inspector of Pacific Islanders, Maryborough for carrying Pacific Islanders coastwise. Details entered on the permit include the number, the office (Maryborough) of the Pacific Island Immigration Department, the date, and the statement that the master of the ship named had been granted permission to carry (number entered) of Pacific Islanders from the port of Maryborough to another named port. The permit then listed the names and islands of the Islanders, and their destination (for example, Cairns, Townsville, Port Douglas, Brisbane, Rockhampton, Mackay, Geraldton (Innisfail), Bundaberg).

Miscellaneous correspondence & forms

28/03/1898–28/02/1908

Series ID [13190](#)

This series consists of completed forms of various kinds and miscellaneous correspondence with various government agencies and individuals regarding the identification, employment, wages, deportation or repatriation, and exemption of Pacific Island labourers as well as authorisations to sign on labour. The correspondence was kept by the Inspector of Pacific Islanders, Maryborough and contains the names and details of many Pacific Islanders.

Logbooks of vessels 'Helena' and 'Lochiel'

18/11/1898–14/07/1903

Series ID [16998](#)

The log of Government Agent J.K. Craig written on the voyages of the 'Helena' and the 'Lochiel'. These voyages were undertaken for the recruitment of labour from Pacific Islands and visited the New Hebrides and the Solomon Islands. Under Instruction 12 of the *Pacific Island Labourers Act 1880*, a daily log of occurrences on such voyages was compulsory. Details contained in the log include the ship's passage, weather conditions, movement of the agents and other boats, number and names of labourers recruited and some personal details; also ship's company, tonnage, owners of vessel, receipts for tonics, lotions, poultices and elixirs, directions for preserving food, destroying insects and disinfecting clothes.

Books of memoranda sent

31/07/1899–1/06/1908

Series ID 13196

These books contain copies (on stubs) of memoranda sent by the Inspector of Pacific Islanders, Maryborough and also in his capacity as Assistant Immigration Agent, Maryborough. Details for each entry include the date, to whom sent, and the content of the memorandum. Messages were sent mainly to the Immigration Agent, Brisbane (who was also the Inspector of Pacific Islanders), other government agencies such as the Government Labour Bureau, and individuals. Matters concern administrative matters, Pacific Islanders' travel and pay, labour requirements, etc.

Items 18859-18864 in this series are included in [Online Index to Australian South Sea Islanders](#)

List of Pacific Island labourers engaged on the 'Sydney Belle'

19/10/1903–19/10/1903

Series ID 13194

This list has the heading "Pacific Island Immigration (Queensland), list of labourers engaged by the master of the labour vessel 'Sydney Belle' under licences dated 6 April 1903 and brought to Maryborough on 19th day of October 1903". Details for each entry on the list include the serial number, sex, name, relationship to other recruits, date when recruited, island where recruited, village where recruited, where previously employed, rate of wages, to whom allotted on arrival (mostly Kalamia). Also included are the name of the master, the name of the government agent and a summary of the recruits on board from islands of the Solomons and New Hebrides.

Inspector of Pacific Islanders, Port Douglas**Cash book, Pacific Islanders' wages**

Circa 1/10/1890–Circa 31/05/1902

Series ID 13201

This cash book, kept by the Inspector of Pacific Islanders, Port Douglas, records amounts received from Pacific Islanders and lodged to their credit in Savings bank accounts, and withdrawals paid to Islanders. Under Cash, details for each entry include the date, number of savings bank pass book, name of islander, ledger folio, amount received from islander, withdrawal received from Savings Bank. Under Per Contra, details also include withdrawal paid to islanders and witness to payment.

For details in this register, please refer to [Online Index to Australian South Sea Islanders](#)

Ledger, Pacific Islanders' wages

Circa 1/02/1891–Circa 30/06/1907

Series ID 13199

This ledger records deposits and withdrawals in Pacific Islanders' Savings Bank Accounts kept by the Inspector of Pacific Islanders, Port Douglas. Details entered for each Islander include the Pass Book number, the name of the islander, ex (name of ship), and the name and address of employer. These entries are followed by spreadsheet columns for recording

bank transactions with ledger details for each entry including the date, transaction, Cash Book folio number, deposits, withdrawals, balance and remarks.

For details in this ledger, please refer to [Online Index to Australian South Sea Islanders](#)

Register of agreements

Circa 1/01/1894–Circa 31/12/1905

Series ID [13202](#)

This register of agreements kept under the *Pacific Island Labourers Acts 1880–1892* section 3, Amending Act, records the names of employers, estates (plantations) and districts in Port Douglas and Mossman. Details entered for each Pacific Islander include the number of inward passenger list, the name, sex and island of the Islander, the ship arrived on, date of agreement and expiration, wages, return passage when paid and by whom, and general remarks (deaths, returns home, re-engaged etc).

For details in this register, please refer to [Online Index to Australian South Sea Islanders](#)

Letterbook

12/08/1906–11/02/1908

Series ID [13200](#)

Letterbook of letters sent by the Inspector of Pacific Islanders, Port Douglas.

Inspector of Pacific Islanders, Townsville

Ledger, Pacific Islanders' wages

12/12/1884–31/12/1907

Series ID [13203](#)

This ledger records deposits and withdrawals in Pacific Islanders' Savings Bank Accounts kept by the Inspector of Pacific Islanders, Maryborough. Details entered for each Islander include the Pass Book number, the name of the islander, ex (name of ship), and the name and address of employer. These entries are followed by spreadsheet columns for recording bank transactions with ledger details for each entry including the date, transaction, Cash Book folio number, deposits, withdrawals, balance and remarks.

For details in this register, please refer to [Online Index to Australian South Sea Islanders](#)

Account book

7/01/1881–30/03/1883

Series ID [7244](#)

This register records payments made or received by the 'Polynesian Inspector in account with various employers and government departments'. Details for each entry include the date and particulars of the transaction (for example regarding Pacific Islanders' wages, costs of return passages, stamp duties on agreements), and amounts.

Register of returns of number of Pacific Islanders employed

30/06/1885–30/06/1896

Series ID 13204

This register records the return submitted of the number of Pacific Islanders employed on each plantation for the half year. Details for each entry include the name of the employer, the plantation and farm, and the number of employees.

Cash book, Pacific Islander' wages

3/07/1885–30/07/1908

Series ID 13205

This cash book, kept by the Inspector of Pacific Islanders, Townsville, records amounts received from Pacific Islanders and lodged to their credit in Savings bank accounts, and withdrawals paid to Islanders. Under Cash, details for each entry include the date, number of savings bank pass book, name of islander, ledger folio, amount received from islander, withdrawal received from Savings Bank. Under Per Contra, details also include withdrawal paid to islanders and witness to payment. Throughout the book quarterly Savings Bank balances are also included.

For details in this cash book, please refer to [Online Index to Australian South Sea Islanders](#)

Register of B/Cs sent

30/07/1885–24/11/1896

Series ID 18559

This register records the date of the correspondence, the date received, the subject matter (including those related to immigrants or Pacific Islanders), from whom received, the date forwarded and to whom sent (usually the Immigration Agent, Brisbane or other government agency).

Register of applications for exemptions

1/01/1907–31/12/1908

Series ID 18560

This register records applications by Pacific Island labourers for exemption from the provisions of the Commonwealth *Pacific Island Labourers Act 1901*. Details for each entry include the name, island and village of the Islander, the number, ship and date of arrival, and remarks re exemption.

Part 2: Records relating to South Sea Islanders created by various agencies

Aboriginal and Islanders Advancement Department

Recognition of Pacific Islanders as distinct ethnic group

Circa 1/01/1975–Circa 31/12/1976

Item ID [510495](#)

Proposed amendments to the Aborigines Regulation 1972–Aboriginal & Islander welfare policies; special needs of Pacific Islanders

25/03/1976–25/03/1976

Item ID [1038193](#)

Aboriginals and South Sea Islanders–A list of names and ages (3 Pages)

1/01/1942–31/12/1942

Item ID [716211](#)

Agriculture and Stock Department

Register of Certificates of Exemptions granted (or refused) to Aliens under The *Sugar Cultivation Act 1913*

Circa 1/01/1922–Circa 31/12/1923

Item ID [194](#)

Sugar Cultivation Act 1913: Applications for & certificates of exemptions granted under the Act & correspondence re same

1914 -1927

Item ID [902865–902875](#)

Series ID [6041](#)

Assistant Immigration Agent, Maryborough

Register of rations issued to immigrants, Maryborough

1875 – 1882

Item ID [18418](#)

For details in this register, please refer to [Online Index to Australian South Sea Islanders](#)

Chief Secretary's Department

Letter from the Chief Protector of Aboriginals, Walter E Roth, to the Chief Secretary's Office, regarding the enforced deportation of Pacific Islander Labourers and the effect it may have on Aboriginal women married to Polynesians.

21/02/1905

Digital Item ID [3430](#)

Letter from the Chief Secretary's Office to the Prime Minister, Sir George Houstoun Reid, regarding the enforced deportation of Pacific Islander Labourers and the effect it may have on Aboriginal women married to Polynesians

28/03/1905

Digital Item ID [3429](#)

Letter from the Prime Minister, Sir George Houstoun Reid, to the Premier of Queensland, regarding the enforced deportation of Pacific Islander Labourers and the effect it may have on Aboriginal women married to Polynesians

5/04/1905

Digital Item ID [3428](#)

Letter from the Secretary of the Maryborough Chamber of Commerce to the Secretary of the Sugar Industry Labour Commission, regarding deportation of Pacific Islanders of over 30 years residence in the Maryborough district

23/04/1906

Digital Item ID [3508](#)

Correspondence with J E Wirth-Marsh regarding labour matters (Kanaka) and government relief

1/10/1891–30/04/1892

Item ID [861875](#)

Colonial Secretary's Office

Inwards correspondence (includes labour vessel 'Bobtail Nag' log of voyage)

Circa 1/01/1878–Circa 31/12/1878

Item ID [846982](#)

Correspondence and papers regarding the 'Hopeful' voyage case

Circa 1/01/1884–Circa 31/12/1889

Item ID [6821](#)

Correspondence, clippings, reports and petitions, etc. re 'Hopeful' voyage case

Circa 1/01/1884–Circa 31/12/1889

Item ID [6825](#)

Correspondence and papers re South Sea Islanders

Circa 1/01/1932–Circa 31/12/1938

Item ID [18099](#)

Inwards correspondence

15/12/1859–Circa 31/12/1896

Series ID [5253](#)

Registers of letters received

15/12/1859–Circa 31/12/1896

Series ID [11936](#)

Court of Petty Sessions, Mossman

Deposition books

17/04/1899–31/12/1919

Series ID [9979](#)

Court of Petty Sessions, Normanton

Register of arrival of South Sea Islanders at Sweer's Island
17/09/1868–22/12/1871
Series ID 11691

Register of South Sea Islanders employed on plantations
23/09/1868–26/03/1873
Series ID 11690

Court of Petty Sessions, Springsure

Wages account book for credit of the Inspector of Polynesian Wages Account–Court
of Petty Sessions, Springsure
13/09/1877–24/01/1880
Series ID 8323

Court of Petty Sessions, Walkerston

Police Charge Bench Book
1/01/1883–17/09/1905
Series ID 827

Crown Solicitor's Office

Briefs and associated papers in cases involving Pacific Islanders
Circa 1/01/1871–Circa 31/12/1889
Series ID 12102

Item 7866 of this series is indexed in [Online Index to Australian South Sea Islanders](#)

Briefs etc relating to the *Pacific Island Employers' Compensation Act & Pacific Island
Labourers Act*
Circa 1/01/1884–Circa 31/12/1897
Item ID 7861

Briefs and transcripts of depositions–Aboriginal, Chinese, Cingalese, Javanese,
Malay and Polynesian labourers
Circa 1/01/1858–Circa 31/12/1908
Item ID 7901

Briefs arising from cases re the *Pacific Island Labourers Act*
Circa 1/01/1880–Circa 31/12/1890
Item ID 7904

Correspondence arising from the case of Chuck Lum
Circa 1/01/1890–Circa 31/12/1890
Item ID 7903

Claims by Francis Charles Hornbrook on behalf of Kanakas on the estate of Mary
Margaret O'Reilly
Circa 1/01/1902–Circa 31/12/1905
Item ID 8519

Ledger used as evidence in the claim by Francis Charles Hornbrook on behalf of
Kanakas on the estate of Mary Margaret O'Reilly
Circa 1/01/1902–Circa 31/12/1905
Item ID [8518](#)

Home Secretary's Office

Correspondence and papers re South Sea Islanders in receipt of indigence
allowance
1/01/1932–31/12/1938
Item ID [18099](#)

Indigence cases in batch files
5/11/1861–Circa 31/12/1975
Series ID [8400](#)

Correspondence records re hospitals and hospital boards
Circa 1/01/1889–Circa 31/12/1921
Item ID [18148](#)

General correspondence
Circa 1/01/1904–Circa 31/12/1935
Series ID [5263](#)

Registers of letters received
Circa 1/01/1897–Circa 31/12/1935
Series ID [12844](#)

Hospital for Pacific Islanders, Maryborough

Diaries
1/01/1884–31/12/1885
Series ID [15138](#)

Death record
1/10/1884–23/12/1888
Series ID [18520](#)

Admission register – Hospital
2/10/1884–23/12/1888
Series ID [15139](#)

Register of out-patients
7/04/1886–7/11/1888
Series ID [18521](#)

List of out-patients from the Hospital for Pacific Islanders, Maryborough
Circa 30/11/1888
Digital Item ID [3507](#)

Immigration Department

Register of Pacific Islanders

1/01/1870–31/12/1903

Series ID 13122

This register of Pacific Islanders was kept by the Immigration Department and details for each entry include the number, Pacific Islander's pass book number, name and island, arrival ship and date, notes, and amounts with some annotations regarding these payments. In the front of the register there is a list of the abbreviations used in the notes to indicate the whereabouts of the Islanders: C.I., cannot identify; D., Gone to Dunwich or Friday Island; H., Gone home to Islands; Viti., Gone to Fiji; N.G., Gone to New Guinea; All the rest, present address unknown; Ex., Exempt, either under the Federal or State issues. For details in this register, please refer to [Online Index to Australian South Sea Islanders](#)

List of Pacific Island labourers

1/12/1865–31/01/1904

Series ID 13092

These two volumes list Pacific Islanders recruited for labour in Queensland. Details entered include: serial number, sex, name, relationship to other recruits, date when recruited, village or passage where recruited.

Item 18598 of this series is indexed in [Online Index to Australian South Sea Islanders](#)

Insolvency, Intestacy and Insanity Office, Brisbane

Protective management files

Circa 1/1 1865–Circa 31/12/1995

Series ID 334

Justice Department

Inquest files

Circa 1/01/1859–Circa 31/12/1978

Series ID 36

Inquests are magisterial inquiries held before a coroner without a jury to establish the fact of death, the identity of the deceased, when, where and how death occurred and whether any person is to be charged with a criminal offence under the Criminal Code.

Refer also to the [Inquest Index online](#).

Registers of Coroners' inquests

9/05/1876–Circa 31/12/1979

Series ID 236

Magistrate's Office, Maryborough

Police Magistrate's letterbooks

7/06/1862–17/12/1910

Series ID 15131

Mines and Works Department

Ross Island, Townsville, erection of a residence for Polynesian inspector

Circa 1/09/1888–Circa 30/09/1888

Item ID 1014030

Office of the Governor of Queensland

Copy (Colonial Office letterhead), confidential despatches, Sir Anthony Musgrave to the Earl of Derby, concerning the sentencing to death of Neil McNeil and Bernard Williams for murder of Pacific Islanders, and subsequent petitions and local reactions

17/12/1884–27/12/1884

Item ID 17715

Letterbook of despatches to the Governor General

28/01/1901–31/12/1904

Series ID 12791

Official correspondence

20/12/1859–Circa 31/12/1906

Series ID 1139

Return of Vessel for 'Roderick Dhu', which was licensed to introduce Pacific Islanders to Queensland

2/02/1897

Item Part ID 1235101

Police Department, Police Service Commissioner's Office

Arms and ammunition–Pacific Islanders

Circa 1/01/1897–Circa 31/12/1907

Item ID 86509

Assistant inspectors of Pacific Islanders

Circa 1/01/1898–Circa 31/12/1900

Item ID 86552

Pacific Islanders and Javanese

Circa 1/01/1887–Circa 31/12/1899

Item ID 86446

Deportation of Kanakas

Circa 1/01/1897–Circa 31/12/1924

Item ID 86538

Coloured labour (Asiatic Aliens)

Circa 1/01/1913–Circa 31/12/1913

Item ID 86558

Premiers Department

Correspondence, various re British New Guinea, New Hebrides; New Australia colonists, Paraquay; Pacific Cable—estimates, minutes of meetings, conference
1/01/1890–28/02/1902
Item ID [861792](#)

Correspondence and associated papers relating to Pacific Island Labourers and deportation. Includes 1/12/1889 colonial report 461 on British Solomon Islands 1903 – 1905
1/12/1889–30/04/1907
Item ID [861832](#)

Correspondence and associated papers relating to Pacific Island Labourers. Includes regulations (including life-saving), returns of licensed vessels, lists of government agents
1/04/1891–31/05/1894
Item ID [861833](#)

Correspondence and associated papers relating to Pacific Island Labourers. Includes lists of government agents, returns of licensed vessels, imperial Pacific order in council 1893 schedule of rules and forms (and acts 1849–1890)
1/04/1891–31/05/1895
Item ID [861834](#)

For details in this item, please refer to [Online Index to Australian South Sea Islanders](#)

Photographic proofs and prints of Queensland
Item ID [435754](#)

Correspondence and associated papers relating to Pacific Island Labourers and deportation, and effects on sugar industry. Includes lists of names of persons requesting exemption, and regarding wages
1/02/1901–31/08/1905
Item ID [861835](#)

Correspondence and associated papers relating to Pacific Island Labourers and deportation. Includes white labour conference, resolutions opposing repatriation, and proposed introduction of other labour
1/08/1901–31/05/1905
Item ID [861836](#)

Correspondence and associated papers relating to Pacific Island Labourers. Includes responses to the Commonwealth Pacific Islanders Labourers Bill, administrative arrangements for deportation
1/10/1901–31/05/1906
Item ID [861837](#)

Correspondence and associated papers relating to Pacific Island Labourers: Papers and log book exhibit of 'Sydney Belle' inquiry
1/05/1902–31/12/1904
Item ID [861838](#)

Correspondence and associated papers relating to Pacific Island Labourers: Papers and log book exhibit of 'Clansman' inquiry

1/06/1904–31/08/1907

Item ID 861839

Inwards and general correspondence

1/07/1898–Circa 31/12/1983

Series ID 5402

Register of letters received

Circa 1/07/1898–Circa 31/12/1952

Series 5401

Prisons Department

Special Subject Batch: Polynesian Islanders

Circa 1/01/1886–Circa 31/12/1899

Item ID 89505

Public Curator Office, Brisbane

Intestacy files

16/12/1868–Circa 31/07/2009

Series ID 335

Public Instruction Department

Polynesian State School administration file

10/02/1933–4/07/1934

Item ID 15873

Joskeleigh State School administration file

31/10/1913–7/03/1935

Item ID 15011

Polynesian State School returns

Circa 1/01/1933–Circa 31/12/1933

Item ID 12799

Walkerston State School admission register

23/05/1938

Item ID 439075

School files

Circa 1/01/1858–23/01/1968

Series ID 12607

The school files created by those schools located near South Sea Islander communities may have relevant information

Letter from a staff member of the Polynesian Provisional School to Mr Smith regarding the closure of the school

29/06/1933

Item Part ID 1219894

Letter from the Director of Education to Michael Alexander McColl, Head Teacher of the Polynesian Provisional School, regarding the date of the official closure of the school

7/12/1933

Item Part ID [1219892](#)

Letter from The Premier, W M Forgan Smith to Alexander McColl, Head Teacher of the Polynesian Provisional School, regarding a proposed visit to Mackay

4/07/1933

Item Part ID [1219893](#)

To find the school admission registers, search [ArchivesSearch](#).

Public Works Department

Mackay, erection of a hospital for the Pacific Islanders

Circa 1/07/1882–Circa 31/07/1882

Item ID [1013956](#)

Pacific Islanders Hospital, work and material required in the erection of a hospital for South Sea Islanders

24/07/1882–24/07/1882

Item ID [1013958](#)

Walkerston Polynesian school

Circa 1/01/1934–Circa 31/12/1934

Item ID [127130](#)

Bundaberg Kanaka Hospital

15/04/1893–15/04/1893

Item ID [582497](#)

Sugar Industry Labour Commission

Papers of the Sugar Industry Labour Commission

2/04/1906–30/06/1906

Series ID [10569](#)

Other finding aids

Indigenous records indexes available in the Public Search Room can also contain Australian South Sea Islander names.

Online indexes and exhibitions:

- [Index to Australian South Sea Islanders](#)
- [Index to Coloured Labour and Asiatic Aliens in Queensland](#)
- [A Unique History: Australian South Sea Islanders in Queensland \(online exhibition\)](#)

Part 3 -- Legislation

The legislation is Queensland State legislation unless otherwise noted.

- 1868 *Polynesian Labourers Act 1868*. Dealt with licenses to import, guarantee of native return, number to be recruited, scale of provisions, and prohibition of liquor.
- 1872 *Pacific Islanders Protection Act 1872*. Amended in 1875. Protection of Pacific Islanders from kidnapping and other criminal offences.
- 1880 *Pacific Island Labourers Act 1880*. Repealed the Act of 1868. Provided for regulation and control of the introduction and treatment of labourers from the Pacific Islands. Limited the age recruits. Return to proper islands. Provision of medical treatments. Provision of rations and dress allowance.
- 1884 *Pacific Island Labourers Act 1884*. More restrictive legislation confining labour to unskilled agricultural pursuits. Crews to be paid wages. No fire arms to be supplied to islanders. Limit recruiting operations further.
- 1885 *Pacific Islanders' Employers' Compensation Act 1885*. Compensation to employers whose employees had returned by order of the Government.
- Pacific Island Labourers Act 1880 Amendment Act (1885)*. Prohibited further importation of labourers after 31st December 1890.
- 1886 *Pacific Island Labourers Act 1880 Amendment Act (1886)*. Amended the definition of Pacific Islanders.
- 1892 *Pacific Island Labourers (Extension) Act of 1892*. Repeal of prohibition.
- 1901 (Cwth) *Immigration Restriction Act 1901*. Received Royal Assent on 23 December 1901. It was described as an Act "to place certain restrictions on immigration and to provide for the removal from the Commonwealth of prohibited immigrants." (refer to Dept Immigration and Multicultural and Indigenous Affairs Fact Sheet 8)
- 1901-1906 (Cwth) *Pacific Islands Labourers Act*. Decreed that there should be no further entry of Islanders after 31 March 1901. After that date deportation was to follow, with some exemptions.
- 1913 *Sugar cultivation Act 1913* was designed to prohibit the employment of 'certain forms of labour in the production of sugar'.

[Queensland State Archives](#) > [Researching the archives](#) > [Indexes](#) > [Other](#) > Australian South Sea Islanders 1867-1908

Australian South Sea Islanders 1867-1908

This index was compiled from a wide variety of sources including Immigration Department records, Inspectors of Pacific Islanders across Queensland, the Crown Solicitor's Office and the Chief Secretary's Department.

Background

[How to use the indexes](#)

[Search the indexes](#)

[Open Data index](#)

[Costs and ordering](#)

[List of sources](#)

Background

South Sea Islanders were first brought to Queensland for work in the cotton fields. However, by 1868 South Sea Islanders were mainly recruited to work on sugar plantations. They played a significant role in the development of this industry but also contributed to the development of farming, grazing and the maritime industry.

The first South Sea Islanders to arrive in Queensland were brought in the 'Don Juan' which arrived in the Brisbane River in August 1863. Between the years 1863 and 1904 an estimated 40,000 to 60,000 South Sea Islanders had entered Queensland. Recruited mainly from the New Hebrides (Vanuatu) and the Solomon Islands, the contribution of these South Sea Island labourers to the economic development of Queensland was an important one.

Rapid growth in recruitment numbers and the reports of abuse and kidnapping ("blackbirding") by certain recruiters led to the introduction of the *Polynesian Labourers Act of 1868*. Soon after, the government introduced further legislation and amendments to legislation that aimed at specifying conditions of recruitment, indenture, deportation, repatriation etc.

Records held in the Queensland State Archives collection referring to South Sea Islanders include: recruitment, transportation and arrival in Queensland; registers of agreement; list of Pacific Island labourers; employment; payment and wages; education; legal issues; health and medical; deportation and repatriation; those who remained in Queensland after 1906; miscellaneous records and maps.

Please refer to the resource guide [Australian South Sea Islander records](#) (PDF, 117KB) for additional information.

How to use the indexes

Since producing the index most if not all of the records listed have been digitised. To locate any corresponding digital images simply enter the Item ID from the index into the catalogue, [ArchivesSearch](#).

Explanatory notes

- the index has been alphabetically arranged by name.
- check all possible spelling variants as many names have been spelt phonetically in the original record
- all given names are written or abbreviated as they appear in the original record

Index available under Open Data initiative

The index to Australian South Sea Islanders 1867-1908 is now available through the Queensland Government's [Open Data](#) initiative. The [Open Data index](#) is available in .csv format.

The content is licensed under a [Creative Commons Attribution 2.5 Australia Licence](#).

POLYNESIAN LABOURERS ACT, CHAPTER 10

No.	Name	Ship	Date of Arrival
33	Tank	Don Juan	1863
34	Kilgus	Don Juan	1863
35	Smith	Don Juan	1863
36	James	Don Juan	1863
37	John	Don Juan	1863
38	George	Don Juan	1863
39	Thomas	Don Juan	1863
40	William	Don Juan	1863
41	James	Don Juan	1863
42	John	Don Juan	1863
43	George	Don Juan	1863
44	Thomas	Don Juan	1863
45	William	Don Juan	1863
46	James	Don Juan	1863
47	John	Don Juan	1863
48	George	Don Juan	1863
49	Thomas	Don Juan	1863
50	William	Don Juan	1863
51	James	Don Juan	1863
52	John	Don Juan	1863
53	George	Don Juan	1863
54	Thomas	Don Juan	1863
55	William	Don Juan	1863
56	James	Don Juan	1863
57	John	Don Juan	1863
58	George	Don Juan	1863
59	Thomas	Don Juan	1863
60	William	Don Juan	1863
61	James	Don Juan	1863
62	John	Don Juan	1863
63	George	Don Juan	1863
64	Thomas	Don Juan	1863
65	William	Don Juan	1863
66	James	Don Juan	1863
67	John	Don Juan	1863
68	George	Don Juan	1863
69	Thomas	Don Juan	1863
70	William	Don Juan	1863

[View larger image](#)

Page 8 from the Register of Pacific Islander ships' arrivals at Maryborough (Queensland State Archives [Item ID 18829](#), Register - ships, Pacific Islanders' passage)

- ? or ... indicate difficulty in interpreting the handwriting
 - or a blank cell indicates that there is no information recorded in the original
- please note that the majority of names have been capitalised
- when searching for names please be aware that many individuals had their names changed by Government Agents and Recruiters [no references to the former family or tribal name may be found], spellings may be phonetic or anglicised.

Locating records on microfilm

- Entries which have the Page/Ref as a word not a page number or year; the word reference is an abbreviation / full name of the Plantation owner or Labour hirer with whom individuals were contracted, e.g. BARBEL = Conrad Barbeler; CLAYT = Clayton; CRAN = Thomas CRAN.
- Documents are arranged in alpha groupings of the Plantation owner or Labour hirer therefore you will find CRAN follows CORNWELL, e.g. CLARKE, CLAYTON, CORNWELL, CRAN etc.
- Patience is required to locate a single document as they are not alphabetically arranged within each plantation owners group.

Search the indexes

A - B (PDF, 282KB), C - D (PDF, 142KB)

E - G (PDF, 124KB), H - K (PDF, 173KB)

L - M (PDF, 368KB), N (PDF, 116KB)

O - Q (PDF, 142KB), R - S (PDF, 196KB)

T (PDF, 290KB), U - Z (PDF, 217KB)

Please note, Adobe Reader is required to open and print these Portable Document Format (PDF) index files and is free to download from the [Adobe website](#).

If you have difficulty accessing PDF files from this website please [contact us](#).

Open Data index

- [Australian South Sea Islanders 1867-1908](#) (CSV, 2.10MB)

If you have difficulty accessing the file from this website please [contact us](#).

Costs and ordering

Since producing the index, most if not all of the records listed have been digitised. Therefore, prior to ordering a record enter the Item ID into the catalogue, [ArchivesSearch](#), to locate any corresponding digital images. Copies of the digital images can be downloaded free of charge.

However if a print copy is requested, the cost for each item requested is A\$6.40. For this fee you will receive a copy of the relevant page.

To order copies of an item, please complete an [index order form](#) (PDF, 36KB). When completing the form, quote the name of the person, page/ref, prev sys loc and microfilm.

List of sources

The Australian South Sea Islanders index was compiled from the following records held within Queensland State Archives' collection:

- Log books written by the Government Agents accompanying the recruiting vessels *Ceara Heath* and *Lizzie* [QSA [Item ID 7866](#), Legal papers, c1/1/1884-c31/12/1884]
- List of Pacific Island Labourers [QSA [Item ID 18598](#), Register - Pacific Islanders, c1/12/1865-c31/1/1904]
- Register of Pacific Islanders [QSA [Item ID 18681](#), Register - Pacific Islanders, c1/1/1870-c31/12/1903]
- Register of rations issued to immigrants, Maryborough [QSA [Item ID 18418](#), Register - government relief, 18/11/1875-c31/8/1882]
- Records of wages paid to Pacific Islanders [QSA [Series ID 7752](#), Ledgers, Pacific Islanders' Wages, 3/2/1896-10/1/1907]
- Register of Pacific Islander ships' arrivals at Maryborough [QSA [Item ID 18829](#), Register - ships, Pacific Islanders', passage, 9/3/1869-26/3/1877]
- Registers of Pacific Islanders, agreements with employers, and plantations where employed [QSA [Series ID 13184](#), Registers of Agreements, c1/6/1877-c31/10/1903]
- Queensland government agreement forms setting out conditions of employment of Pacific Island labourers [QSA [Series ID 13175](#), Memoranda of Agreements re Employment of Pacific Islanders, c1/1/1877-c31/12/1906]
- Register of Pacific Islander labourers exempt from the provision of clauses 3, 4, and 10 of the "Pacific Island Labourers Act 1880 Amendment Act 1884" [QSA [Item ID 18836](#), Register - Pacific Islanders, 7/5/1884-c31/12/1885]
- Receipts for return passages of Polynesian (Pacific Island) labourers [QSA [Item ID 18854](#), Receipts - cash, 3/1/1890-c31/5/1904]
- Book of copies (on stubs) of telegrams sent by the Inspector of Pacific Islanders, Maryborough (also as Assistant Immigration Agent, Maryborough) [QSA [Item ID 18871](#), Correspondence - outwards, 12/3/1901-1/5/1902]
- Memoranda (on stubs) sent by the Inspector of Pacific Islanders, Maryborough and as Assistant Immigration Agent, Maryborough [QSA [Series ID 13196](#), Books of Memoranda Sent, 31/7/1899-1/6/1908, excluding Item ID 18858]
- Register of re-agreements [QSA [Item ID 18847](#), Register - Pacific Islanders, 6/3/1893-1/2/1905]
- Ledger, Pacific Islanders' wages [QSA [Item ID 18838](#), Ledger, 2/2/1885-26/11/1907]
- Inspector of Pacific Islanders, Maryborough bank account [QSA [Series ID 13182](#), Cash Books, Queensland National Bank Account, 6/1/1886-7/10/1907]
- Cash book, Pacific Islanders' wages [QSA [Item ID 18842](#), Cash Book, 2/2/1885-26/11/1907]
- Register of agreements [QSA [Item ID 18876](#), Register - Pacific Islanders, c1/1/1894-c31/12/1905]
- Ledger, Pacific Islanders' Wages [QSA [Item ID 18873](#), Ledger, c1/2/1891-c30/6/1907]
- Cash book, Pacific Islanders' Wages [QSA [Item ID 18875](#), Cash Book, c1/10/1890-c31/5/1902]
- Ledger, Pacific Islanders' wages [QSA [Item ID 18877](#), Ledger, 12/12/1884-c31/12/1907]

- Register of agreements [QSA [Item ID 18827](#), Register - Pacific Islanders, c1/4/1884-c31/8/1897]
- Cash book, Pacific Islanders' wages [QSA [Item ID 18881](#), Cash Book, 3/7/1885-30/7/1908].

Last updated 24 June 2014



[Queensland State Archives](#) > [Researching the archives](#)
> [Historical studies](#) > [Historical essays](#) > Australian
South Sea Islanders in Queensland

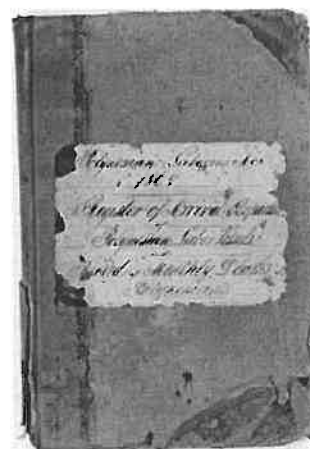
Australian South Sea Islanders in Queensland

Over a period of 40 years from the early 1860s, tens of thousands of Pacific Islanders worked on Queensland plantations. They were often underpaid, treated harshly and many died, yet they contributed greatly to the growing state and founded the Australian South Sea Islander community in Queensland today.

Over 62,000 indenture contracts were issued for Pacific Islanders to work as labourers in Queensland between 1863 and 1904. They travelled to Queensland on 807 voyages involving 80 islands in what is generally known as the Queensland labour trade from Melanesia. Given the rate of re-enlistments from the islands it seems likely that there were about 50,000 individuals involved. The vast majority (95 per cent) were adolescent and young adult males. The terms 'South Sea Islander' or 'Kanaka' were used to describe the labour recruits who came from islands within present-day Vanuatu, Solomon Islands, Papua New Guinea, Loyalty Islands (New Caledonia), Fiji, Kiribati and Tuvalu. The vast majority came from Vanuatu and Solomon Islands. The whole process was supervised by the Queensland Government through the Pacific Islanders branch of the Immigration Department. Queensland State Archives has substantial holdings on their history, with the best details surviving from Maryborough and Port Douglas, along with central immigration registers and supporting files such as those of the Colonial Secretary and the Governor.

Throughout the labour trade there were allegations of kidnapping and slavery, which have some foundation. Today's Australian South Sea Islanders refer to themselves as the descendants of slaves and it is clear that the community harbours a deep sense of injustice. Estimates vary as to the number of Islanders who were physically forced into the labour trade: most historians would say 10 to 15 per cent; the Islanders suggest a larger percentage. All of them were 'culturally kidnapped', meaning that Europeans took cultural advantage of their small-scale societies and enticed them to come to Australia under circumstances they did not understand. Once indentured in Queensland they were servile bonded labour, paid poorly (by comparison with European labourers), often held in circumstances that can be described as slave-like, and subjected to the same level of racial discrimination as faced by Indigenous Australians.

Four categories of Islander immigrants emerged: first-time indenture labourers who had never left their



Queensland State
Archives Digital Image
ID 23883: Register of
the arrival of vessels
bringing Pacific
Islanders to various
ports (from 1878, to
Maryborough only),
1868 - 1881

islands before; re-enlistments; time-expired labourers; and ticket-holders. Re-enlistments occurred from the late 1860s onwards, and by the early 1890s more than one-quarter of the newly arriving labourers were re-enlisting: in 1897, 230 of the 934 new recruits had previously served terms of indenture in Queensland, Fiji, New Caledonia and Samoa. Time-expired labourers were those who had completed one three-year agreement but opted to stay in Queensland and entered new agreements. The time-expired segment of the Islander workforce grew increasingly important over the four decades of immigration. By 1895 time-expired Islanders made up 65 per cent of the Melanesians. Ticket-holders were the 835 Islanders who had resided in Queensland for five years before September 1884 – they had no restriction on the types of work they undertook. In 1892 there were 716 ticket-holders, 704 in 1901 and 691 in 1906. Expressed as a proportion of the overall Islander population in Queensland from 1885 to 1906, in any one year ticket-holders constituted between seven and 11 per cent of the Islander population.

These categories are important for three reasons. First, from the 1860s onwards the standard rate of pay was £6 per year for first-indentured labourers. Re-recruiting labourers received around £10 a year, and between the mid-1880s to the 1900s re-enlisting labourers in Queensland earned £16 to £23 a year. Several hundred others, the ticket-holders, were outside the indenture system and could earn independently, some running small businesses and farms.

Second, government records show that in excess of 14,564 Islander labourers died in Queensland between 1868 and 1906, with around another 100 deaths between 1863 and 1867. This is by far the highest death rate for any group of immigrants in Australia. Pacific Islanders lived in an isolated environment lacking many of the common diseases found on large land masses. For those newly arrived in Queensland, the common cold, tuberculosis, pneumonia, bronchitis and pleurisy were major killers. The Islanders also had no immunity to measles and chicken pox, which caused large numbers of deaths. Dysentery also occurred, particularly on plantations where public health standards were often low. The estimated death rate of Islanders in the first year of their indenture was 81 per 1000 – over three times the estimated death rate for the rest of the Islander population, which was 26 per 1000. If an Islander survived the first three years in Queensland, he or she would probably have lived until old age, remembering of course that in the nineteenth-century people died much younger than today. The upper band of the death rate for ticket-holders was 14 per 1000 – a similar rate to Europeans in Queensland. It was always the newcomers, the first-indenture labourers, who suffered worst in Queensland. The third reason that the categories are important is that the present-day Australian South Sea Islander population is

largely descended from the time-expired and ticket-holder Islanders.

The Islanders worked six days a week on plantations and farms, able to wander the districts in their spare time. From the 1880s onwards they began to attend Christian missions, predominantly run by the Anglicans, Presbyterians and the Queensland Kanaka Mission. Their accommodation was either barracks or island-style houses which they constructed themselves and preferred.

In 1901 the new Commonwealth Government passed the Pacific Island Labourers Act, part of a package of legislation to achieve a White Australia. The aim was to remove Pacific Islanders from Australia through forced deportation and gradual attrition, specifically by repatriating those on new three-year contracts entered into up until the end of 1903. Only ticket-holders were automatically exempt. This racist legislation was in line with the sentiments of the majority of the parliamentarians and the Australian people. To compensate the sugar industry the Australian Government introduced an embargo on all 'foreign' sugar and introduced a bonus for sugar produced using only white labour. Under 1906 changes, Islanders were exempt from deportation if they had lived continuously in Australia since 31 December 1886, were aged or infirm, had children educated at state schools, owned freehold land, were (before 31 October 1906) married to a person not from their own island, or could prove that they would be in danger if they returned home. The majority of present-day Australian South Sea Islanders are descended from this group.

Forced deportation began in late 1906 and continued until mid-1908. Families were ripped apart and property was forfeited. On return to the islands many faced severe problems readjusting to their old lives and some were killed. The official number allowed to remain was 1654, but later estimates suggest that around 2000 remained. Today 20,000 to 40,000 people make up the Australian South Islander community, the numbers depending on self-identification, particularly for the 40 to 50 per cent of those who have Australian Indigenous ancestry.

Clive Moore
Professor of Pacific and Australian History
The University of Queensland
November 2013

Public Records held at Queensland State Archives relating to the Australian South Sea Islander people in Queensland

Queensland State Archives Agency ID 2271: Inspector of Pacific Islanders, Townsville
Queensland State Archives Agency ID 2268: Inspector

of Pacific Islanders, Maryborough
Queensland State Archives [Agency ID 2270](#): Inspector
of Pacific Islanders, Port Douglas
Queensland State Archives [Agency ID 2267](#): Inspector
of Pacific Islanders
Queensland State Archives [Agency ID 2709](#): Hospital
for Pacific Islanders, Maryborough
Queensland State Archives [Series ID 13092](#): List of
Pacific Island Labourers
Queensland State Archives [Series ID 13173](#): Register of
Agreements
Queensland State Archives [Series ID 5384](#): Batch and
Miscellaneous Subject Files
Queensland State Archives [Series ID 12774](#):
Letterbooks of Despatches to the Secretary of State for
the Colonies
Queensland State Archives [Series ID 10569](#): Papers of
the Sugar Industry Labour Commission

Other records on the Australian South Sea Islander
people in Queensland can be located in the
[ArchivesSearch](#) catalogue.

Related resources

67 items relating to Australian South Sea Islanders
from Queensland State Archives' collection are inscribed
on the UNESCO [Australian Memory of the World
Register](#). These items have been digitised and made
available in [Image Queensland](#).

Additional resources on the Australian South Sea
Islander people in Queensland can be located on
Queensland State Archives' [website](#).

Last updated 29 November 2013



QVP 1896 VOL 3

1896.

QUEENSLAND.

PACIFIC ISLANDERS' FUND.

(ANNUAL STATEMENT OF ACCOUNT.)

Presented to both Houses of Parliament by Command.

THE SECRETARY TO THE PRIME MINISTER, BRISBANE.

Department of Immigration,
Pacific Island Labour Branch,
Brisbane, 29th July, 1896.

SIR,—I have the honour to append hereto a Statement showing the result of the transactions of the Pacific Islanders' Fund for the year ending 30th June, 1896.

The total amounts collected and disbursed were £6,883 7s. 11d. and £10,710 3s. 4d. respectively.

The Deceased Islanders' Estates Account, after payment of all expenses, shows an increase of £1,093 9s. 10d.; and the Return Passage Account a decrease of £105.

The total decrease on the year's transactions amounts to £3,826 15s. 5d., and arises as follows:—

	Dr.	£	s.	d.	£	s.	d.
General Purposes	...	5,211	13	3			
Return Passages	...	105	0	0			
					5,316	13	3
	Cr.						
Deceased Islanders' Estates	...	1,093	9	10			
Fines	...	18	0	6			
Agreement Fees	...	378	7	6			
					1,489	17	10
					<u>£3,826</u>	<u>15</u>	<u>5</u>

Of this decrease £3,032 2s. 5d. occurred during the half-year ending 31st December, 1895, and is attributable to scarcity of Capitation Fees and Return Passage money. There has also been unforeseen expenditure of exceptional character to the amount of £444 18s. 4d., not likely to occur again. Since January last the Return Passages have been coming in, and a new source of revenue has arisen—namely, the Registration Fee of 5s. a head on all agreements with Pacific Islanders under the new Regulations. This item in four months has brought in £429, and I look forward confidently to being able to report a surplus next year.

The Ledger Balances stand as follow:—

	Cr.	£	s.	d.	£	s.	d.
Return Passages	...	29,778	10	6			
Deceased Islanders' Estates	...	32,508	0	10			
Agreement Fees	...	378	7	6			
Fines	...	812	11	3			
					63,477	10	1
	Dr.						
General Purposes	...	21,812	8	0			
Hospitals	...	21,530	0	10			
					43,342	8	10
Balance on 30th June, 1896	...				<u>£20,135</u>	<u>1</u>	<u>3</u>

I have, &c.,

J. O'N. BRENNAN,
Officer in Charge.

SUMMARY of OPERATIONS upon the PACIFIC ISLANDERS' FUND during the Year ending 30th June, 1896

<i>Receipts.</i>		£	s.	d.	£	s.	d.
Balance at 30th June, 1895	...	2,537	0	0	23,961	16	8
Capitation Fees Paid on Application to Recruit	...	1,417	16	10			
Deceased Islanders' Estates	...	2,195	0	0			
Return Passages	...	429	15	0			
Registration Fees on Agreements	...	117	8	4			
Miscellaneous (including Recoupment of Expenditure on Account of the "Sybil" Quarantine)	...	28	0	6			
Fines	...				6,465	0	8
					<u>£30,426</u>	<u>17</u>	<u>4</u>

<i>Expenditure.</i>		£	s.	d.	£	s.	d.
SALARIES.							
Head Office	...	880	0	0			
Inspectors	...	1,779	6	5			
Government Agents	...	2,488	2	10			
Junior Clerk at Bundaberg	...	52	10	0			
Messenger	...	50	0	0	5,249	19	3
CONTINGENCIES.							
Forage Allowances	...	332	3	0			
Clerical Assistance	...	63	16	0			
Care of Destitute Islanders	...	510	3	10			
Postage	...	86	17	3			
Expenses—		246	7	10			
Inspectors	...	37	15	0			
Government Agents	...	10	0	0			
Fines	...	2,240	0	0			
Return Passages	...	17	15	0			
Court Cases and Inquiries	...	831	0	0			
Capitation Fees Refunded	...	323	12	11			
Payments ex Deceased Islanders' Estates	...	22	11	8			
Office Furniture	...	38	2	6			
Return Passages not Provided	...	78	11	10			
Sundries	...	200	0	0			
Unforeseen (Gratuity to Mrs. Lawley)	...				5,041	16	10
					<u>10,291</u>	<u>16</u>	<u>1</u>
					<u>26,135</u>	<u>1</u>	<u>3</u>
Balance at Credit of Pacific Islanders' Fund, 30th June, 1896	...				<u>£30,426</u>	<u>17</u>	<u>4</u>

J. O'N. BRENNAN,
Officer in Charge.

Price 3d.]

By Authority: EDMUND GREGORY, Government Printer, William street, Brisbane.

PP
1904-5
V. I

1904.

QUEENSLAND.

PACIFIC ISLAND IMMIGRATION.

(IMMIGRATION AGENT'S ANNUAL REPORT UPON)

Presented to both Houses of Parliament by Command.

THE UNDER SECRETARY, CHIEF SECRETARY'S DEPARTMENT.

Department of Immigration,
Pacific Island Labour Branch,
Brisbane, 30th June, 1904.

SIR,—For the information of the Honourable the Chief Secretary, I have the honour to present a Report upon the working of this Department during the year ending 31st December, 1903.

1.—RECRUITING OF LABOURERS.

Eight vessels, of a total registered capacity of 1,424 tons, and possessing certified accommodation to carry 1,084 passengers, have been engaged in the trade, and they were despatched as under:—

	Departures.	Tonnage.	Accommodation.
Brisbane	2	320	264
Bundaberg	5	826	686
Maryborough	1	175	133
Townsville	3	534	383
Cairns	1	152	125

On the 1st January, 1903, there were eight vessels engaged in the trade. Of these five were in port and three at sea. The "Ivanhoe" grounded on Florida on 1st March, and was abandoned; the crew and passengers being removed to the Commissioner's residence. The returns were subsequently landed at their homes, and the officers and crew were sent to Sydney. (The "Ivanhoe" was recently refloated, and arrived at Maryborough on the 31st March last.) The "Roderick Dhu" also received injuries whilst at the islands, and was partially condemned; the Commissioner refusing to allow her to return to Queensland until some repairs were effected. Her passengers were transferred to the "Lady Norman." The "Coquette," whilst preparing for sea, was totally destroyed by fire at Townsville on the 5th December last, there was no loss of life, and all passengers' luggage was saved.

There were twelve arrivals at and the same number of departures from Queensland during the year, and on 31st December, 1903, there were three vessels (including "Ivanhoe") at sea and four in port.

One thousand and thirty-seven labourers, of whom 998 were males and 39 females, arrived during the year, and of these—

312	had served in Queensland before
24	Nonmea
20	Fiji
5	Florida
4	Samoa
2	Sandwich
1	Api
1	Rubianna
668	were new arrivals

1,037

The groups at which they were recruited are as under (*vide* Appendix C)—

New Hebrides	345
Banks	21
Torres	8
Solomon	663

1,037

They were allotted on arrival to the following Districts:—

Ayr	230	Maryborough	19
Bundaberg	149	Mackay	69
Cairns	161	Port Douglas	15
Childers	88	Died on board before allotment	2
Geraldton	229	Rejected as physically unfit	21
Ingham	104		

The time occupied on the voyages ranged from 57 to 186 days, the average being 131 days.

C. A. 79—1904.

The vessels despatched from the various ports obtained labour for the districts mentioned as follow:—

From	For
Brisbane	Cairns, Geraldton
Maryborough	Maryborough, Bundaberg, Ayr, Geraldton, Ingham.
Bundaberg	Bundaberg, Childers, Mackay, Ayr, Geraldton, Ingham, Cairns.
Mackay	Mackay, Geraldton.
Townsville	Ayr, Bundaberg, Ingham, Port Douglas.

2.—DEPARTURE OF LABOURERS.

The total number of Islanders returned to their homes during the year was 1,065—1,014 males and 51 females—accompanied by 82 children. They were carried by 12 ships; the greatest number carried in one vessel was 179, the average being 89.

The following are the groups to which the returns belong (*vide* Appendix D):—

New Hebrides	385
Banks	59
Torres	55
Solomon	566

Total 1,065

I attach a return (Appendix E) as an item of interest, which shows the arrivals and departures for the years 1898-1903, inclusive.

3.—MORTALITY.

There was a decrease of deaths, as compared with the previous year, as will be seen from the following Schedule compiled from the Head Office registers:—

District.	1902.		1903.	
	Population.	Deaths.	Population.	Deaths.
Brisbane	166	11	161	7
Beenleigh	65	2	70	1
Maryborough	283	1	266	1
Childers	673	19	566	16
Bundaberg	1,658	145	1,683	72
Rockhampton	186	7	123	7
Mackay	1,708	44	1,801	38
Bowen	45	1	40	...
Ayr	535	8	603	15
Townsville	23	...	28	1
Ingham	1,259	17	1,045	37
Geraldton	746	16	652	11
Cairns	670	28	844	18
Port Douglas	420	2	369	13
Thursday Island	491	26	427	2
Other Places	486	1
	8,878	327	8,614	234

4.—LABOURERS WITHIN THE STATE.

It is only possible to give an approximate estimate of the number of Islanders in the State, on account of the migratory habits of the time-expired boys. The numbers in the respective Districts from estimates prepared by the several Inspectors as on the 31st December, 1903, were as follow:—

District.	NUMBER OF ISLANDERS COMPARED WITH 1902.			
	1902.	1903.	Increase.	Decrease.
Brisbane	166	161	...	5
Beenleigh	65	70	5	...
Maryborough	283	266	...	17
Childers	673	566	...	107
Bundaberg	1,658	1,683	...	25
Rockhampton	186	123	...	18
Mackay	1,708	1,801	...	407
Bowen	45	40	...	5
Ayr	535	603	68	...
Townsville	23	28	5	...
Ingham	1,259	1,045	...	214
Geraldton	746	652	...	94
Cairns	670	844	174	...
Port Douglas	420	369	...	51
Thursday Island	491	427	...	64
Districts other than Sugar	...	486	486	...
	8,878	8,614	738	1,002

Decrease within the year, 264.

6.—THE PACIFIC ISLANDERS' FUND.

A summary of the operations on this fund for the year will be found in Appendix A. The receipts have exceeded the expenditure by £727 11s., which is solely in consequence of the large amount of capitation fees deposited, over £900 of which will have to be refunded, and, as no more such fees will be paid owing to the cessation of recruiting, there will be a steady drain upon the fund. The increase for the year arises as follows:—

	Cr.	£	s.	d.	£	s.	d.
Registration fees	492	8	1			
Deceased Islanders' estates	828	3	10			
Return passages	340	0	0			
Fines	24	8	0			
					1,684	19	11
	Dr.						
General purposes				957	8	11
					£727	11	0
The ledger balances are—	Cr.						
Registration fees	5,400	3	2			
Deceased Islanders' estates	33,186	2	8			
Return passages	34,939	10	6			
Fines	1,231	14	0			
					79,757	10	4
	Dr.						
General purposes	46,603	10	0			
Hospitals	21,530	0	10			
					68,133	10	10
Balance on 31st December, 1903					£11,623	19	6

I have, &c.,
J. O'N. BRENNAN,
Immigration Agent.

APPENDIX A.

SUMMARY OF OPERATIONS upon the PACIFIC ISLANDERS' FUND for the Year ending 31st December, 1903.

RECEIPTS.		£	s.	d.	£	s.	d.
Balance on 31st December, 1902					10,896	8	6
Capitation Fees paid on application to recruit		4,764	0	0			
Deceased Islanders' Estates		1,239	5	9			
Return Passages		2,036	0	0			
Fines		31	3	8			
Registration Fees on Agreements		717	0	3			
Consolidated Revenue on account Savings Bank Defalcations at Childers		1,224	10	0			
Refund of Expenditure		115	12	9			
Sundries		6	10	0			
					10,138	2	6
					£21,029	10	11
EXPENDITURE.		£	s.	d.	£	s.	d.
Salaries—							
Head Office Staff		661	18	4			
Inspectors		1,567	17	6			
Junior Clerks		98	6	4			
Government Agents		135	0	0			
Messengers		35	3	11			
					2,518	6	1
Contingencies—							
Forage		438	6	8			
Clerical Assistance		66	5	10			
Care (medical and otherwise) of Destitute Islanders		247	0	2			
Postage		32	16	10			
Travelling Expenses, Inspectors, and Government Agents		232	17	10			
Return Passages Refunded		1,695	0	0			
Capitation Fees Refunded		1,242	0	0			
Payments from Deceased Islanders' Estates		411	1	11			
Schools		355	6	8			
Cleaning Offices		22	3	6			
Sustenance Allowance (Cairns)		18	5	0			
Return Passages provided by Department		25	0	0			
Bonus to Police Officer		10	0	0			
Subscription to "White's Mercantile Gazette"		4	10	0			
Payments on account of Savings Bank Deficiencies, Childers		40	17	9			
Payments on account of Savings Bank Deficiencies, Cairns		395	2	0			
Court Cases and Inquiries		22	9	0			
Salary Superannuation Government Agents		1,417	1	10			
Telegrams		53	18	5			
Fare of George Cater from Solomon's to Sydney		12	0	0			
Compensation to Hawkins for lost time of four Islanders		3	0	0			
Sundries		17	16	3			
Fines		1	5	8			
					6,887	5	4
Balance on 31st December, 1903					9,405	11	5
					11,623	19	6
					£21,029	10	11

The following is a Schedule of Agreements, Reagreements, and Transfers made during the year, and will afford some idea of the work devolving on the several Inspectors:—

District.	OVERSEA AGREEMENTS.		RE-AGREEMENTS.		TRANSFERS.	
	Sets.	Names.	Sets.	Names.	Sets.	Names.
Brisbane	15	19
Beenleigh	14	16
Maryborough	1	19	28	44
Childers	2	38	170	236	1	1
Bundaberg	14	149	189	468	2	4
Rockhampton	2	2
Mackay	6	69	329	619	7	32
Bowen
Ayr	8	230	47	129
Townsville
Ingham	6	104	224	513	14	110
Geraldton	6	229	126	206
Cairns	7	161	127	339	7	66
Port Douglas	7	15	92	190	5	8
	57	1,014	1,363	2,781	36	211

Total number of agreements made, 1,456.

Total number of Islanders signed on, 4,006

The following is a list of the number of Employers registered in each District in 1902 and 1903:—

District.	1902.	1903.	Increase.	Decrease.
Brisbane	17	13	...	4
Beenleigh	12	7	...	5
Maryborough	23	23
Childers	124	75	...	49
Bundaberg	78	69	...	19
Rockhampton	4	1	...	3
Mackay	249	222	...	27
Bowen	1	1
Ayr	24	27	3	...
Townsville
Ingham	103	92	...	11
Geraldton	52	49	...	3
Cairns	49	47	...	2
Port Douglas	73	57	...	16
	809	672	3	140

5.—DEPARTMENTAL STAFF.

Head Office, Brisbane.—Immigration Agent (Officer in Charge), Chief Clerk and Assistant Inspector, and 1 Clerk.

Bundaberg.—1 Inspector and 1 Assistant Inspector.

Childers.—1 Inspector (Clerk of Petty Sessions acts).

Rockhampton.—1 Inspector (Inspector of State Children acts).

Mackay.—1 Inspector and 1 Assistant Inspector.

Maryborough.—Police Magistrate acts.

Bowen.—1 Inspector (Police Magistrate acts).

Townsville.—1 Inspector.

Cairns.—1 Inspector (Police Magistrate acts, with clerical assistance).

Ayr.—1 Inspector (Sergeant of Police acts).

Beenleigh.—1 Inspector (Police Magistrate acts).

Ingham.—1 Inspector and 1 Assistant Inspector (Police Magistrate and Assistant Clerk of Petty Sessions act).

Geraldton.—1 Inspector and 1 Assistant Inspector (Police Magistrate and Assistant Clerk of Petty Sessions act).

Port Douglas.—1 Inspector (Clerk of Petty Sessions acts).

Thursday Island.—1 Inspector (Clerk of Petty Sessions acts).

APPENDIX B.
SUMMARY OF SAVINGS BANK OPERATIONS OF PACIFIC ISLANDERS' ACCOUNTS, 1902.

	Brisbane.	Beemleigh.	Maryborough.	Childers.	Hamahans.	Rockhampton.	Madras.	Townsville.	Ayr.	Ingham.	Geraldton.	Cairns.	Port Douglas.	Thursday Island.	Bowen.	Totals.	
Number of Current Accounts, 31st December, 1902	274	69	69	453	1,060	56	489	29	337	784	171	392	224	31	7	4,691	
Balance 31st December, 1902	£ s. d. 3,370 0 11	£ s. d. 684 8 9	£ s. d. 655 16 6	£ s. d. 2,185 17 4	£ s. d. 5,941 6 1	£ s. d. 1,188 9 3	£ s. d. 4,478 0 0	£ s. d. 249 13 9	£ s. d. 1,415 9 7	£ s. d. 4,672 16 0	£ s. d. 2,057 15 4	£ s. d. 2,459 7 4	£ s. d. 2,687 0 11	£ s. d. 360 13 9	£ s. d. 37 19 9	£ s. d. 32,351 1 4	
Received from Interest on Deposits Bank during the year	402 14 6	220 19 4	246 2 9	1,298 4 10	2,408 15 4	395 11 4	2,664 1 8	114 11 6	946 5 7	3,695 6 1	1,271 12 3	2,469 0 3	917 5 8	642 2 11	40 8 11	17,133 7 11	
Withdrawn from Bank and paid to Islanders during the year	516 8 8	135 13 4	552 15 8	1,309 3 8	2,432 15 0	352 11 9	1,467 1 8	120 12 11	712 9 0	4,084 14 0	1,340 9 2	732 1 0	1,349 15 5	1,169 12 6	12 17 8	15,309 1 5	
Differences	*23 9 2	95 6 0	*306 12 11	*18 10	*13 19 8	42 13 7	527 0 0	*6 1 5	283 16 7	*479 7 11	*68 16 11	1,766 19 3	*122 9 9	452 10 7	27 11 3	1,824 6 6	
Number of Current Accounts, 31st December, 1903	270	63	55	346	989	44	701	29	328	653	296	580	228	62	6	4,449	
Balance 31st December, 1903	£ s. d. 3,346 17 9	£ s. d. 1,023 14 9	£ s. d. 349 3 6	£ s. d. 2,184 18 6	£ s. d. 5,327 6 5	£ s. d. 1,231 9 6	£ s. d. 5,667 0 0	£ s. d. 235 12 4	£ s. d. 1,549 6 2	£ s. d. 4,698 3 1	£ s. d. 1,968 18 5	£ s. d. 4,225 6 7	£ s. d. 2,134 11 2	£ s. d. 813 4 2	£ s. d. 65 11 0	£ s. d. 34,575 7 10	

* Includes Withdrawals exceed Deposits.

57

Statistics on the Number of Labourers from Each Island

TABLE 1—ORIGIN OF PACIFIC ISLAND LABOURERS IN QUEENSLAND—Estimates by single years and main island groups

Year	LOYALTY	NEW HEBRIDES					SANTA CRUZ (incl. Tikopia)	SOLOMONS			OTHER	TOTAL
		South	Central	North	Banks	Torres		South	Central	North		
1863		67										67
64		134										134
65		148										148
66	36	19	122									148
67	329	225	556									177
Total	421	307	881	93							34	1237
%	23.9	17.4	49.9	6.8							2.0	100.0
1868	280	185	157	43	240							948
69		67	9	86	151						33	313
70	27	50	279	62	216							643
71	292	57	442	332	147						9	1352
72	44	139	74	86	118		59	23				461
Total	643	508	961	609	872		59	23			42	3717
%	17.3	13.7	25.9	16.4	23.4		1.6	0.6			1.1	100.0
1873	7	171	229	285	228	74						994
74	47	162	435	543	168	24						1503
75	5	429	774	592	130	6	18		124			2681
76		171	421	714	261	8			707	3		1688
77		264	343	1131	162	86			72	2		1986
Total	59	1197	2202	3265	949	198	18		903	5		8852
%	0.7	13.5	24.9	36.9	10.7	2.2	0.2		10.2	0.1		100.0
1878		169	273	595	158	23	8		209	9	14	1463
79		254	409	890	234	34	12		309	12	21	2182
80		302	338	819	449	26			61			1995
81		285	419	1081	167	24	12		628	1		2643
82		317	453	1381	425	123			428	12		3139
Total		1327	1892	4766	1433	230	32		1635	34	35	11422
%		11.6	16.6	41.7	12.6	2.0	0.3		14.3	0.3	0.3	100.0
1883		334	476	1717	342	8	99		759	91	178	5273
84		138	181	527	134	30	44		508	79	84	3265
85		234	243	634	211	57	17		488	19	9	1916
86		195	202	528	175	48	15		407	15	7	1595
87		242	253	657	219	60	18		507	18	10	1988
Total		1143	1355	4063	1081	203	193		2669	222	288	14037
%		8.1	9.7	28.9	7.7	1.4	1.4		19.0	1.6	2.1	100.0
1888		123	224	524	193	61	91		1052			2291
89		158	286	665	183	120			620			2032
90		156	284	659	180	15			1165			2459
91		64	116	271	63	20			516			1050
92		24	43	100	54	8			235			464
Total		525	953	2219	673	224	91		3588			8296
%		6.3	11.5	26.8	8.1	2.7	1.1		43.2			100.0
1893		85	155	360	64	50			416			1130
94		86	156	364	120	80	108		945			1859
95		29	120	269	76	24	19		577			1305
96		54	94	124	87				423		191	782
97		11	48	96	46				733			934
Total		265	573	1213	393	154	127		3094			6010
%		4.4	9.5	20.2	6.5	2.6	2.1		51.5			100.0
1898		59	221	138	37	2			721			1178
99		91	245	279	59				848			1522
1900		166	178	361	81	73			884			1743
01		152	72	237	56	13			1061	90		1681
02		25	60	155	21	3			875			1139
03		35	121	189	21	8			637	26		1037
04			9	8	2				59			78
Total		528	906	1367	277	99			5085	116		8378
%		6.3	10.8	16.3	3.3	1.2			60.7	1.4		100.0
TOTAL	1123	5800	9723	17622	5678	1108	461		17033	400	323	62475
%	1.8	9.3	15.6	28.2	9.1	1.8	0.7		27.3	0.6	0.5	100.0

* Mainly New Guinea Islands.

TABLE 2—ORIGIN OF PACIFIC ISLAND LABOURERS IN QUEENSLAND—Estimates by single islands and five-year periods

	1863	1868	%	1873	1878	1883	%	1888	1893	1898	%	TOTAL	%
	-67	-72	63-72	-77	-82	-87	73-87	-92	-97	-04	88-04		
LOYALTIES													
Mare	199	243	7.0	3	—	—	—	—	—	—	—	385	0.6
Tika	—	9	0.2	—	—	—	—	—	—	—	—	9	—
Lifu	282	377	12.0	56	—	—	—	—	—	—	—	715	1.2
Uvea	—	14	0.2	—	—	—	—	—	—	—	—	14	—
Total	421	643	19.4	59	—	—	0.2	—	—	—	—	1123	1.8
NEW HEBRIDES													
SOUTH:													
Aneityum	4	7	0.2	5	34	89	0.4	14	4	—	0.1	157	0.3
Tana	256	318	10.5	864	1034	767	7.8	399	184	422	4.4	4244	6.8
Futuna	15	12	0.5	32	85	30	0.4	25	8	14	0.2	221	0.3
Aniwa	—	—	—	3	1	—	—	—	—	—	—	4	—
Eromanga	32	171	3.7	293	173	257	2.1	87	69	92	1.1	1174	1.9
Total	307	508	14.9	1197	1327	1143	10.7	525	265	528	5.8	5800	9.3
CENTRAL:													
Efate	553	241	14.5	414	149	98	1.9	156	69	82	1.4	1762	2.8
Eradaka	—	—	—	—	2	2	—	—	—	—	—	4	—
Moso	—	—	—	—	—	—	—	—	—	—	—	9	—
Pele	—	—	—	—	3	4	—	5	4	—	—	15	—
Emau	59	8	1.2	41	56	40	0.4	38	18	28	0.4	288	0.5
Nguna	42	7	0.9	98	98	172	1.1	98	56	36	0.9	607	1.0
Mataso	—	—	—	—	—	—	—	—	—	—	—	5	—
Makura	—	8	0.1	—	54	30	0.3	9	6	14	0.1	121	0.2
Emae	91	87	3.3	187	81	121	1.1	78	32	15	0.6	692	1.1
Buninga	5	1	0.1	—	3	4	—	3	2	3	—	21	—
Tongariki	—	—	—	40	30	25	0.3	30	20	3	0.2	148	0.2
Tongoa	48	77	2.3	202	200	149	1.6	110	67	81	1.1	934	1.5
Evoso	—	—	—	—	—	—	—	1	—	—	—	1	—
Epi	83	532	11.2	1220	1212	699	9.1	417	282	639	5.9	5084	8.1
Lamenu	—	—	—	—	4	11	0.1	4	13	—	0.1	32	0.1
Total	881	961	33.6	2202	1892	1355	15.9	953	573	906	10.7	9723	15.5
NORTH:													
Lopevi	—	—	—	13	18	11	0.1	—	5	—	—	47	0.1
Paama	—	14	0.3	145	190	187	1.5	98	76	93	1.2	803	1.3
Ambrim	120	222	6.2	538	647	604	5.2	564	373	396	5.9	3464	5.6
Malekula	—	89	1.6	493	873	860	6.5	310	144	165	2.7	2934	4.7
Pentecost	—	4	0.1	461	533	461	4.3	215	122	164	2.2	1960	3.1
Maewo	—	71	1.3	125	110	105	1.0	50	40	74	0.7	575	0.9
Omba	—	75	1.4	485	1001	813	6.7	626	319	339	5.7	3658	5.8
Espiritu Santo	—	129	2.3	576	868	728	6.3	287	107	111	2.2	2806	4.5
Malo	—	5	0.1	429	526	294	3.6	60	27	25	0.6	1375	2.2
Total	120	609	13.3	3265	4766	4063	35.2	2210	1213	1367	21.2	17622	28.2
BANKS:													
Mera Lava	—	103	1.9	70	76	62	0.6	48	41	38	0.6	438	0.7
Merig	—	3	—	2	—	—	—	—	—	—	—	5	—
Gaua	—	238	4.3	521	677	433	4.8	316	212	140	2.9	2537	4.1
Vanua Lava	—	126	2.3	135	182	192	1.5	88	58	38	0.8	819	1.3
Mota	—	21	0.4	42	73	13	0.4	32	16	14	0.3	241	0.4
Valua	—	321	5.9	100	197	237	1.6	117	43	21	0.8	1036	1.7
Ureparapara	—	60	1.1	79	228	114	1.2	72	23	26	0.5	602	0.9
Total	—	872	15.9	949	1433	1081	10.1	673	393	277	5.9	5678	9.1
TORRES:													
Toga	—	—	—	85	85	88	0.7	140	76	36	1.1	510	0.8
Loh	—	—	—	55	31	31	0.3	26	15	14	0.2	172	0.3
Tegua	—	—	—	30	47	34	0.3	21	38	9	0.3	183	0.3
Metoma	—	—	—	8	5	9	0.1	2	—	—	—	20	—
Hiw	—	—	—	20	62	41	0.4	35	25	40	0.4	223	0.4
Total	—	—	—	198	230	203	1.8	224	154	99	2.1	1108	1.8
TOTAL: NEW HEBRIDES	1308	2950	77.7	7811	9648	7845	73.7	4594	2598	3177	45.7	39931	63.0
SANTA CRUZ	—	—	—	—	25	192	0.6	91	121	—	0.9	429	0.7
SOLOMONS													
SOUTH:													
Bellona	—	1	—	9	24	31	0.2	—	—	—	—	65	0.1
S. Ana	—	—	—	26	21	12	0.2	5	10	—	0.1	74	0.1
S. Catalina	—	—	—	—	—	—	—	—	—	—	—	1	—
S. Cristobal	—	9	0.2	79	150	115	1.0	62	102	290	2.0	807	1.3
Ugi	—	—	—	6	2	1	—	—	—	—	—	4	—
Ulawa	—	—	—	24	41	32	0.3	18	8	24	0.2	147	0.3
Malaita	—	7	0.1	418	493	1214	6.2	1678	1800	3577	31.1	9186	14.7
Ndai	—	—	—	—	—	2	—	—	—	—	—	6	—
Flora	—	30	0.6	80	256	354	2.0	671	357	320	6.0	2069	3.3
Savo	—	—	—	75	50	129	0.7	113	57	57	1.0	481	0.8
Guadalcanal	—	12	0.2	186	598	779	4.6	1041	759	813	11.5	4188	6.7
Total	—	59	1.1	903	1635	2669	15.2	3588	3094	5085	51.9	17033	27.3

	1863	1868	%	1873	1878	1883	%	1888	1893	1898	%	TOTAL	%
	-67	-72	63-72	-77	-82	-87	73-87	-92	-97	-94	88-94		
CENTRAL: Ysobel				5	19	68	0.3			116	0.5	208	0.3
Choiseul						58	0.2					58	0.1
Rannonga					3	12						15	
Vella Lavella					12	73	0.3					85	0.1
Simbo		23	0.4			11						34	0.1
Total		23	0.4	5	34	222	0.8			116	0.5	400	0.6
NORTH: Shortland					2	10						12	
Bougainville					3	35	0.1					38	0.1
Buka					8	50	0.2					58	0.1
Nissan					22	193	0.6					215	0.3
Total					35	288	0.9					323	0.5
TOTAL: SOLOMONS		82	1.5	908	1704	3179	16.9	3588	3094	5201	52.4	17756	28.4
NEW GUINEA ISLANDS													
Feni						37	0.1					37	0.1
Tanga						368	1.1					368	0.6
Lihir						649	1.9					649	1.0
Tabar						28	0.1					28	
Nuguria						3						3	
New Ireland						240	0.7					240	0.4
Duke of York						47	0.1					47	0.1
New Britain						765	2.2					765	1.2
Woodlarks						33	0.1					33	0.1
D'Entrecasteaux						109	0.3					109	0.2
Louisiades						529	1.6					529	0.8
Total						2808	8.2					2808	4.5
OTHER ISLANDS													
Lord Howe				39	38	12	0.3					112	0.2
Tikopia				18	7	1	0.1	23	6		0.1	32	0.1
Rotuma	34		0.6									35	0.1
Samoa		20	0.4									20	
Niue		21	0.4									21	
Gilberts, etc.									191		0.9	191	0.3
Ocean I.				17								17	
Total	34	42	1.4	74	45	13	0.4	23	197		1.0	428	0.7
GRAND TOTAL	1763	3717	100.0	8852	11422	14037	100.0	8296	6010	8378	100.0	62475	100.0
	2.8	5.9		14.2	18.3	22.5		13.3	9.6	13.4		100.0	

TABLE 3.—ISLAND NAMES (with alternatives and corruptions)

LOYALTY ISLANDS: Mare—Britannia; *Tika—Teka, Tiga, Boucher; Lifu—Chabrol; Uvea—Uea, Wea, Halgan; *Wasau—Wassoo (included with Uvea)

NEW HEBRIDES:

SOUTH: Anetiym—Omitium, Anatom, Annotam, Annota; Tana; *Futuna—Erronam, Fortuna; Eromanga—Warrong (?); *Aniwa—Nina, Niva, Immer

CENTRAL: Efate group:

Efate—Sandwich, Vate, Baley; *Erada—Hat; Moso—Deception; *Pele—Pelle; Emau—Hinchinbrook, Mau, Mow, Mou; Nguna—Montague, Coona, Moonah, Muna

Shepherd Islands & neighbours:

Mataso—Two Hills; Makura—Macoora, Macola; Emae—Three Hills, Mai, Amié; *Runinga—Puninga, Bongah (?); *Tongariki; Tongoa—Tonoa, Tonga; *Evo—Ewose; *Laika

Epi group:

Epi—Tasiko, Apic; Lamenu—Lamen

NORTH: Lopevi; Paama—Pau Uma, Parma, Poma; Ambrim; Malekula—Mallicollo; Pentecost—Arragh, Raga, Whitsun; Maewo—Aurora, Maiwe, Maivo; Omba—Leppers, Lepas, Aboa, Aoba

Santo group:

Espiritu Santo—Marina, Santo; Malo—S. Bartholomew, Marlo; Aore; *Tangoa—Tanna

BANKS:

*Mera Lava—Star Peak, Maralaba, Merlay; Merig—St Clair, Merigi; Gaua—S. Maria, Gow, Ganna, Lagoon, Lacona; Mota—Sugarloaf, Amota; Vanua Lava—Vana Lava; *Rowa—Reef Islet, Rowo; Valua—Mota Lava, Saddle, Matlop, Mutlof; Ureparapara—Bligh, Fuka, Buka

TORRES (Ababa, Vava): *Toga—Buga Buga, Buka, Torga, Tog, South; Loh—Salt, Lo; Tegu—Middle, Teguana, Tuga; *Metoma—Oval; Hiw—North, Hiu, Siew, Seu, Ten

SOLOMONS:

SOUTH: *Bellona—Ngiki; S. Catalina; S. Ana; Ugi—Uki; S. Cristobal—S. Christoval, Makira, Arossi; Ulawa—Contrariete; Malaita—Malayette, Mala, Malaya, Carteret; Ndai—Gower; Flora—Florida, Gela, Anuda; Savo—Savoo, Savu; Guadalcanal—Guadalcanar, Guldecana

CENTRAL: Ysobel—S. Isobel, incl. George; Choiseul—Lauri; Rannonga—Renongo; Vella Lavella; Simbo—Eddystone

NORTH: Shortland; Bougainville; Buka; Nissan—Hardy, Green

NEW GUINEA ISLANDS: New Britain; Duke of York; New Ireland—Kavieng; Feni—St John, Anir; Tanga—Kaan, Oraison; Lihir—Gerrit Denys; Tabar—Fisher; Nuguria—Abgarris, Fead

OTHERS: Ocean—Banaba, Pannabah; Lord Howe—Ontong Java; Tikopia—Barwell, Tucopeia; Rotuma; Samoa; Niue—Savage, Imiue

* Islet

† Anuda was identified with Flora in the Tables in QVP, 1878, II, 39; QLC, 1884, I,